

# ODM Quality Report

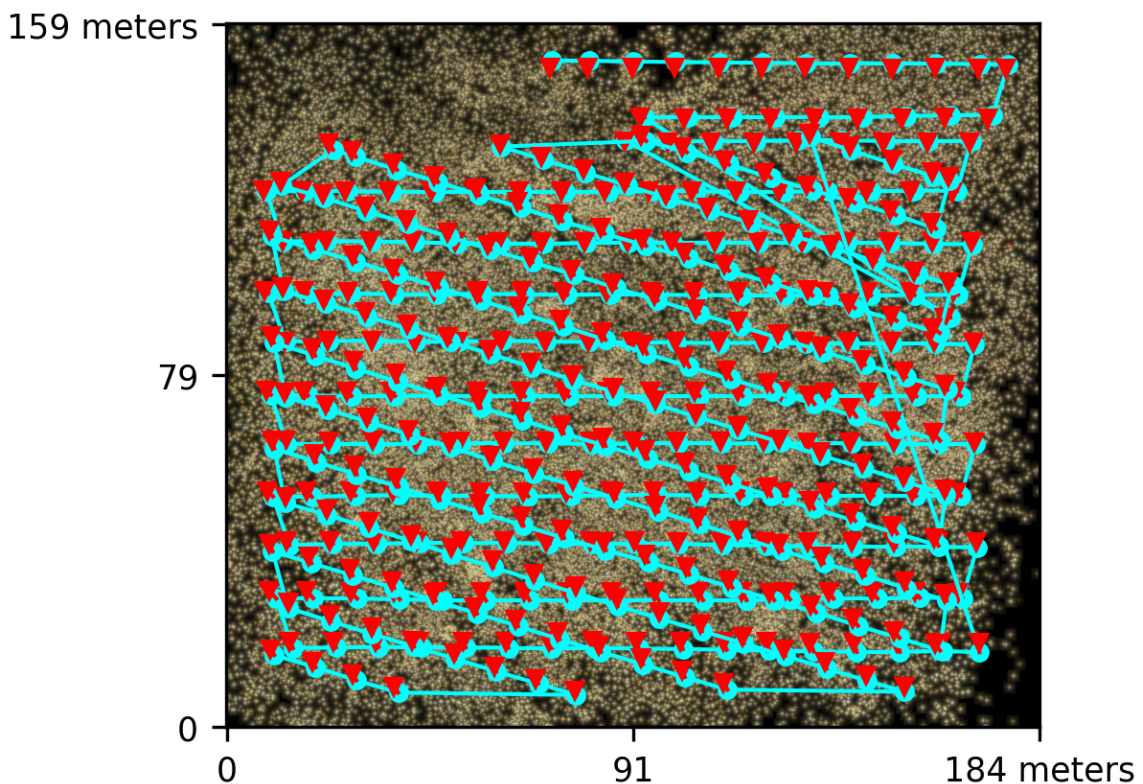
Processed with ODM version 2.8.7

## Dataset Summary

Date	07/07/2022 at 02:19:53
Area Covered	0.023982 km <sup>2</sup>
Processing Time	8.0h:27.0m:5.0s
Capture Start	30/06/2022 at 14:01:28
Capture End	30/06/2022 at 14:56:05

## Processing Summary

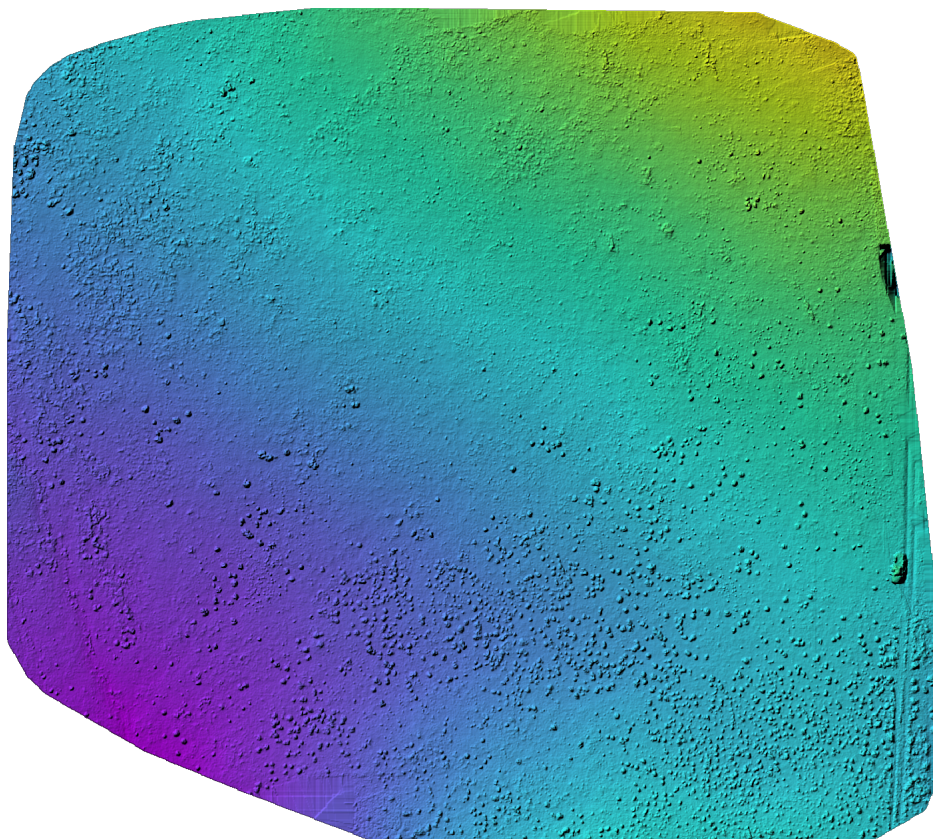
Reconstructed Images	384 over 386 shots (99.5%)
Reconstructed Points (Sparse)	4033386 over 4078334 points (98.9%)
Reconstructed Points (Dense)	428,012,713 points
Average Ground Sampling Distance (GSD)	1.1 cm
Detected Features	233,424 features
Reconstructed Features	40,491 features
Geographic Reference	GPS and GCP
GPS / GCP errors	7.54 / 0.02 meters



# Previews



Orthophoto



Digital Surface Model



1,306.60m

1,322.69m

## Survey Data



■ 2 ■ 3 ■ 4 ■ 5+

## GPS/GCP/3D Errors Details

GPS	Mean	Sigma	RMS Error
X Error (meters)	0.654	0.370	0.751
Y Error (meters)	0.975	0.717	1.210
Z Error (meters)	-7.408	1.058	7.484
Total			7.542

GCP	Mean	Sigma	RMS Error
X Error (meters)	-0.001	0.005	0.005
Y Error (meters)	-0.001	0.003	0.003
Z Error (meters)	0.008	0.023	0.025
Total			0.016

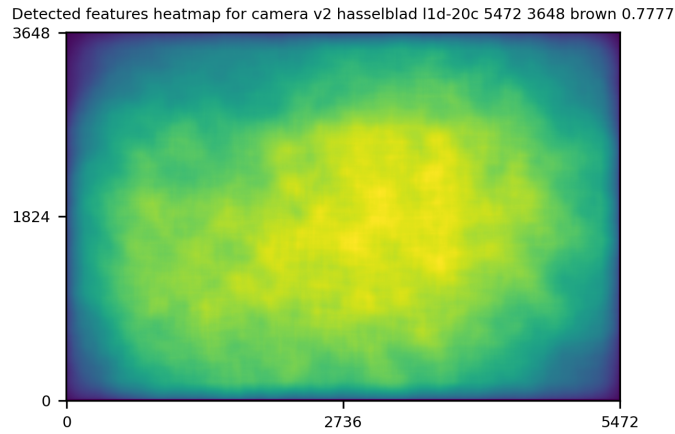
3D	Mean	Sigma	RMS Error
X Error (meters)	0.005	0.007	0.008
Y Error (meters)	0.006	0.009	0.011
Z Error (meters)	0.022	0.028	0.036
Total			0.024

	Absolute	Relative
Horizontal Accuracy CE90 (meters)	0.007	0.019
Vertical Accuracy LE90 (meters)	0.036	0.053

## Ground Control Point Error

ID	Error X (m)	Error Y (m)	Error Z (m)
GCP-0	0.000	0.003	-0.014
GCP-1	-0.003	-0.004	-0.010
GCP-2	-0.006	-0.005	0.062
GCP-3	-0.011	-0.007	-0.003
GCP-4	0.007	-0.000	0.036
GCP-5	0.000	0.000	-0.000
GCP-6	0.000	0.000	-0.000
GCP-7	-0.001	-0.000	-0.003
GCP-8	0.001	0.001	0.001

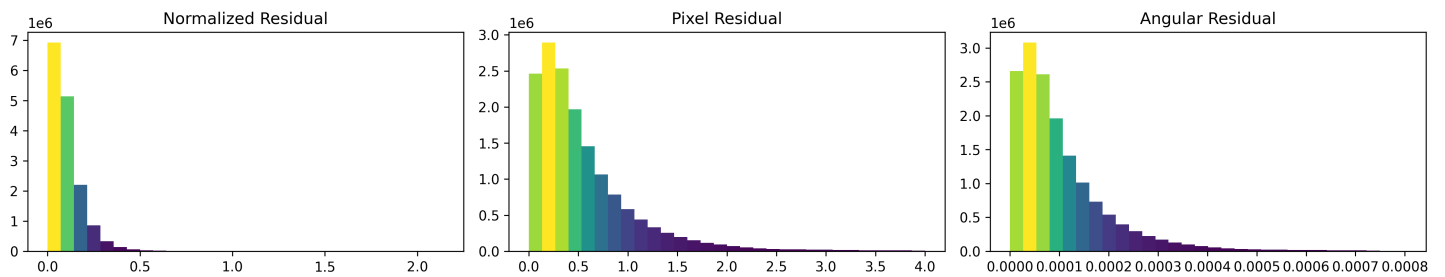
# Features Details



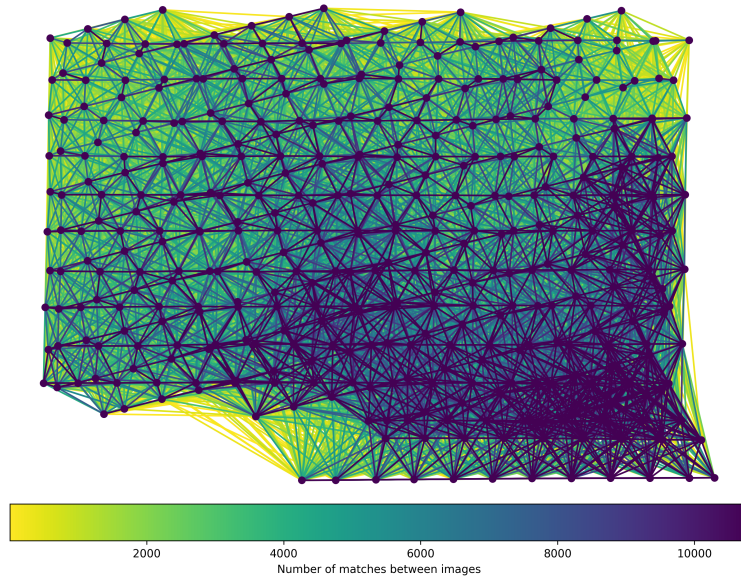
	Min.	Max.	Mean	Median
Detected	80001	282087	199947	233424
Reconstructed	8331	74811	41159	40491

# Reconstruction Details

Average Reprojection Error (normalized / pixels / angular)	0.10 / 0.55 / 0.00010
Average Track Length	3.92 images
Average Track Length (> 2)	6.63 images



# Tracks Details



Length	2	3	4	5	6	7	8	9	10
Count	2363079	616695	284458	165319	111290	81178	62107	49068	39375

# Camera Models Details

**v2 hasselblad l1d-20c 5472 3648 brown 0.7777**

	k1	k2	k3	p1	p2	focal	aspect_ratio	cx	cy
Initial	0.0000	0.0000	0.0000	0.0000	0.0000	0.7778	1.0000	0.0000	0.0000
Optimized	-0.2741	-0.0200	0.1107	0.0090	0.0033	0.9597	1.0000	-0.0063	-0.0321

