

ODM Quality Report

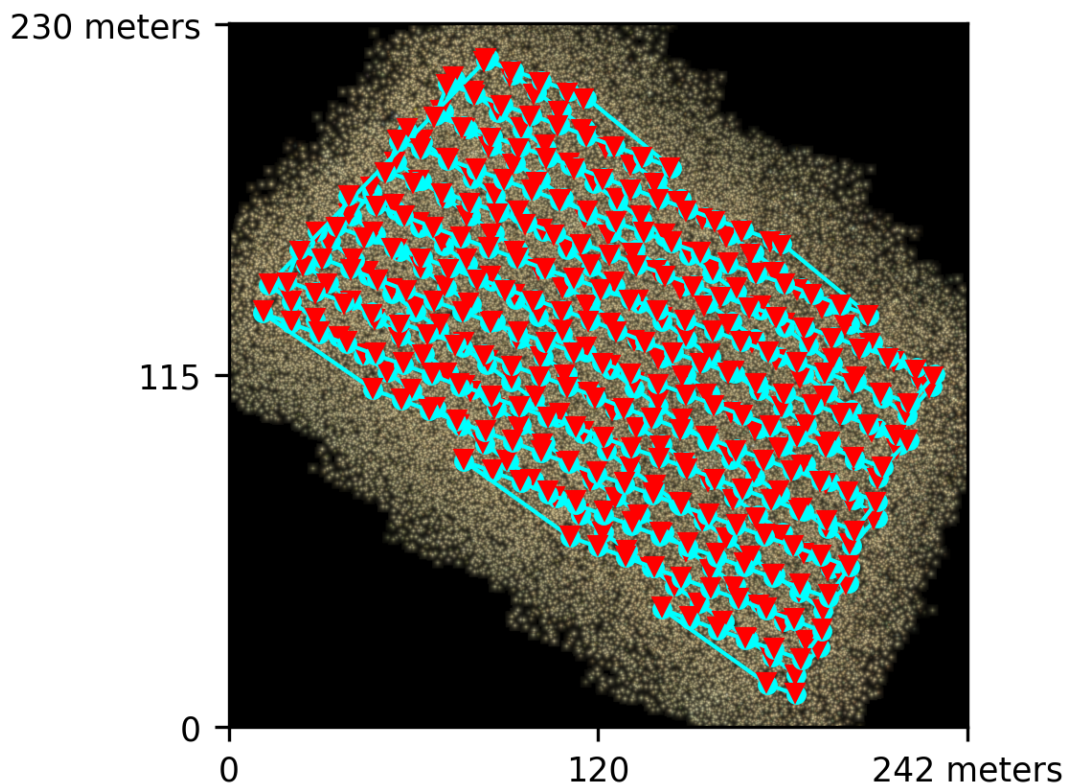
Processed with ODM version 2.8.8

Dataset Summary

Date	13/10/2022 at 18:32:01
Area Covered	0.046075 km ²
Processing Time	13.0h:15.0m:10.0s
Capture Start	30/06/2022 at 04:53:37
Capture End	30/06/2022 at 05:47:13

Processing Summary

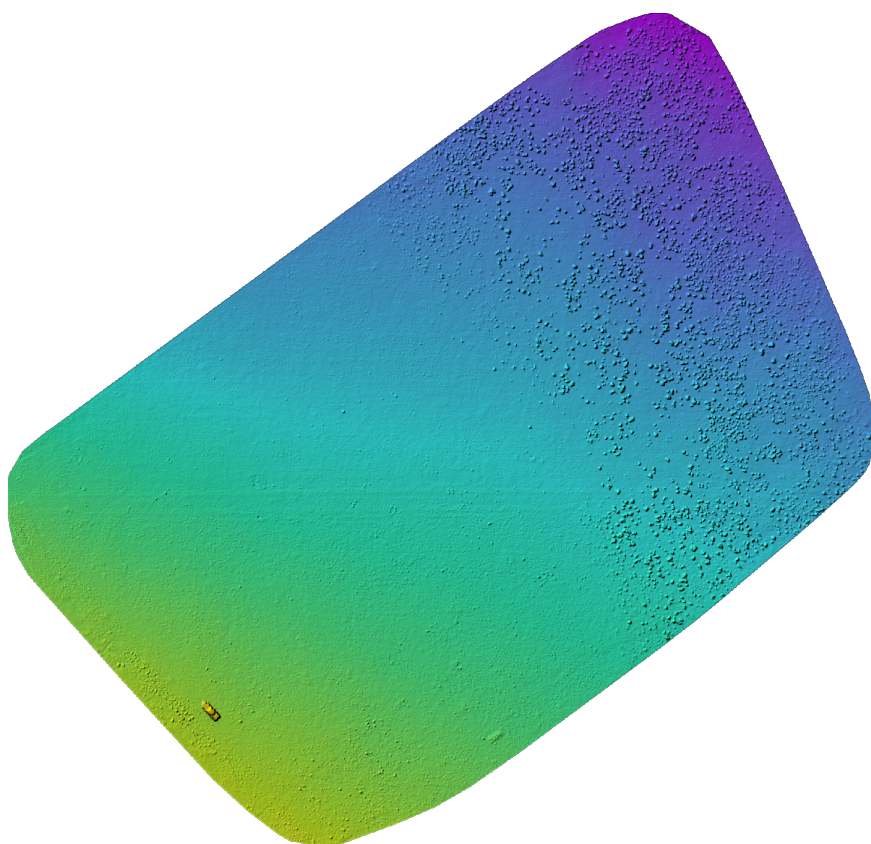
Reconstructed Images	441 over 441 shots (100.0%)
Reconstructed Points (Sparse)	3959806 over 3973521 points (99.7%)
Reconstructed Points (Dense)	420,400,780 points
Average Ground Sampling Distance (GSD)	1.1 cm
Detected Features	95,066 features
Reconstructed Features	70,589 features
Geographic Reference	GPS and GCP
GPS / GCP errors	17.87 / 0.06 meters



Previews



Orthophoto



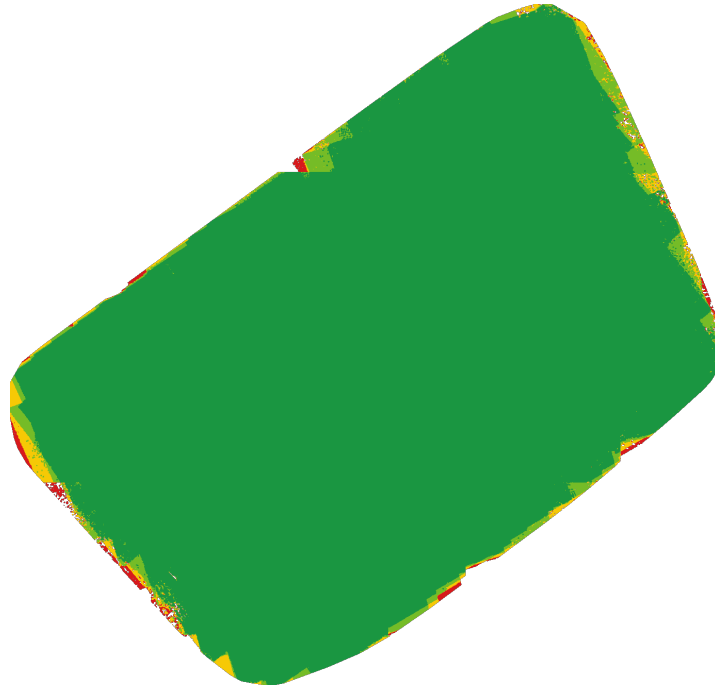
Digital Surface Model



1,304.98m

1,311.97m

Survey Data



■ 2 ■ 3 ■ 4 ■ 5+

GPS/GCP/3D Errors Details

GPS	Mean	Sigma	RMS Error
X Error (meters)	0.363	0.429	0.562
Y Error (meters)	0.357	0.657	0.747
Z Error (meters)	-17.843	1.097	17.877
Total			17.867

GCP	Mean	Sigma	RMS Error
X Error (meters)	0.000	0.010	0.010
Y Error (meters)	-0.001	0.026	0.026
Z Error (meters)	0.003	0.057	0.058
Total			0.055

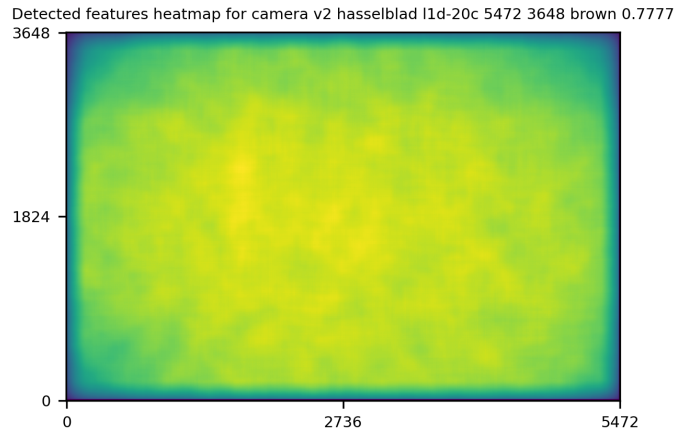
3D	Mean	Sigma	RMS Error
X Error (meters)	0.012	0.015	0.020
Y Error (meters)	0.015	0.022	0.027
Z Error (meters)	0.046	0.074	0.087
Total			0.052

	Absolute	Relative
Horizontal Accuracy CE90 (meters)	0.038	0.042
Vertical Accuracy LE90 (meters)	0.088	0.096

Ground Control Point Error

ID	Error X (m)	Error Y (m)	Error Z (m)
GCP-0	0.010	-0.001	0.006
GCP-1	-0.006	0.010	0.023
GCP-2	0.011	-0.025	-0.088
GCP-3	0.015	0.035	0.071
GCP-4	0.003	-0.010	0.003
GCP-5	0.000	0.033	0.071
GCP-6	-0.005	0.020	-0.093
GCP-7	-0.015	-0.024	-0.019
GCP-8	-0.010	-0.045	0.049

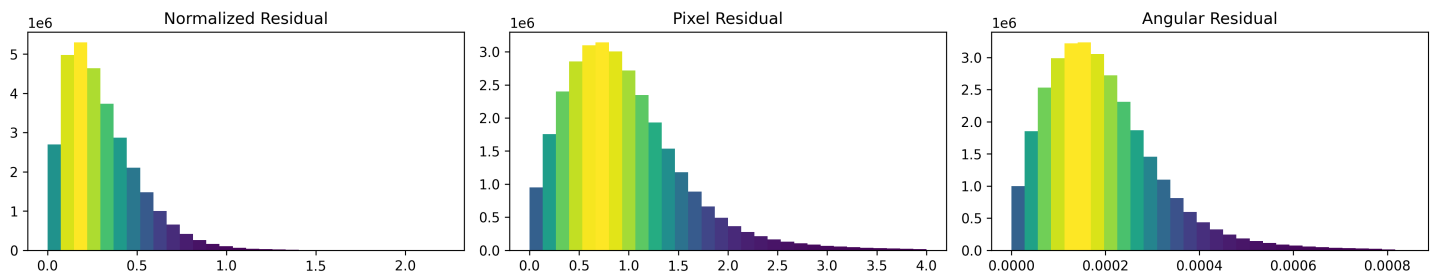
Features Details



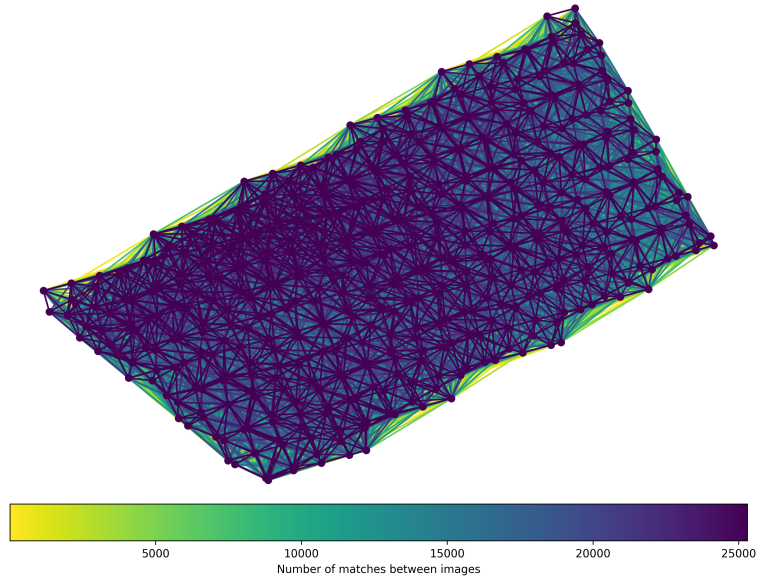
	Min.	Max.	Mean	Median
Detected	80063	100125	94423	95066
Reconstructed	45726	83143	69839	70589

Reconstruction Details

Average Reprojection Error (normalized / pixels / angular)	0.30 / 0.94 / 0.00019
Average Track Length	7.78 images
Average Track Length (> 2)	10.63 images



Tracks Details



Length	2	3	4	5	6	7	8	9	10
Count	1309018	543342	323293	227106	175185	142608	119520	103682	90273

Camera Models Details

v2 hasselblad l1d-20c 5472 3648 brown 0.7777

	k1	k2	k3	p1	p2	focal	aspect_ratio	cx	cy
Initial	0.0000	0.0000	0.0000	0.0000	0.0000	0.7778	1.0000	0.0000	0.0000
Optimized	-0.2215	-0.0191	0.0721	0.0054	0.0018	0.8651	1.0000	-0.0013	-0.0213

