

ODM Quality Report

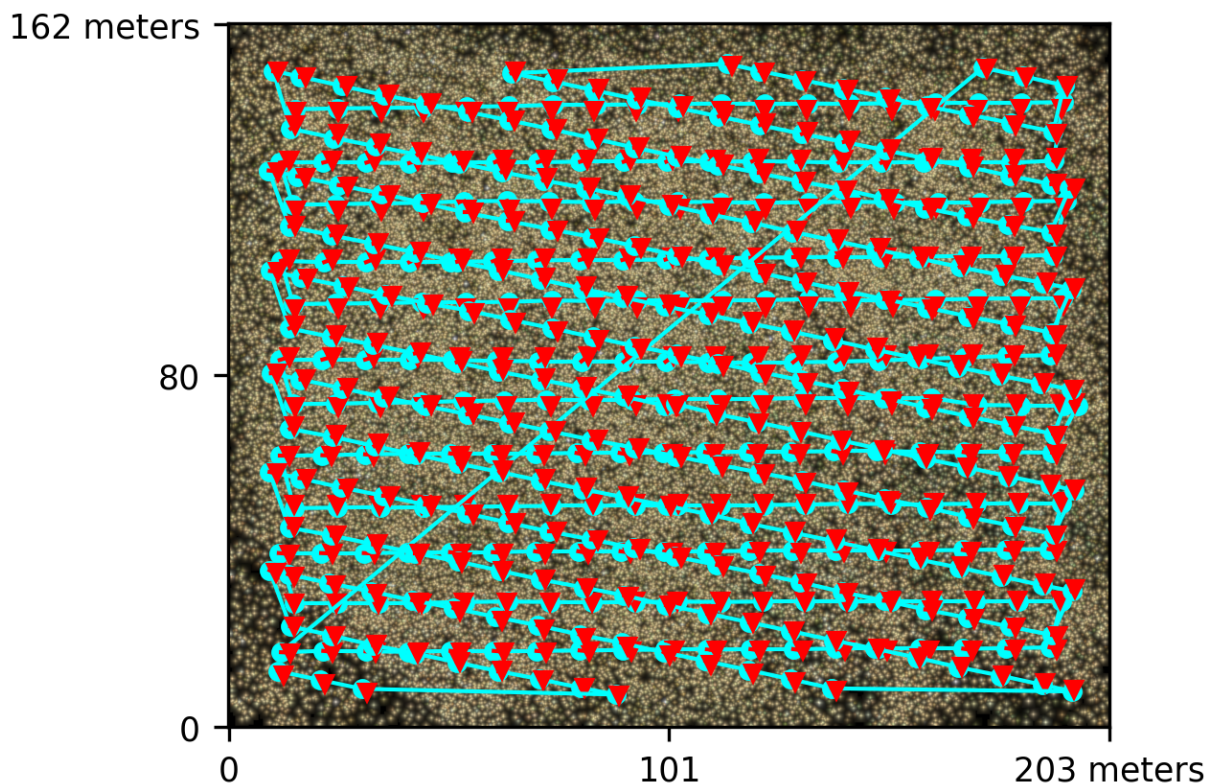
Processed with ODM version 2.8.8

Dataset Summary

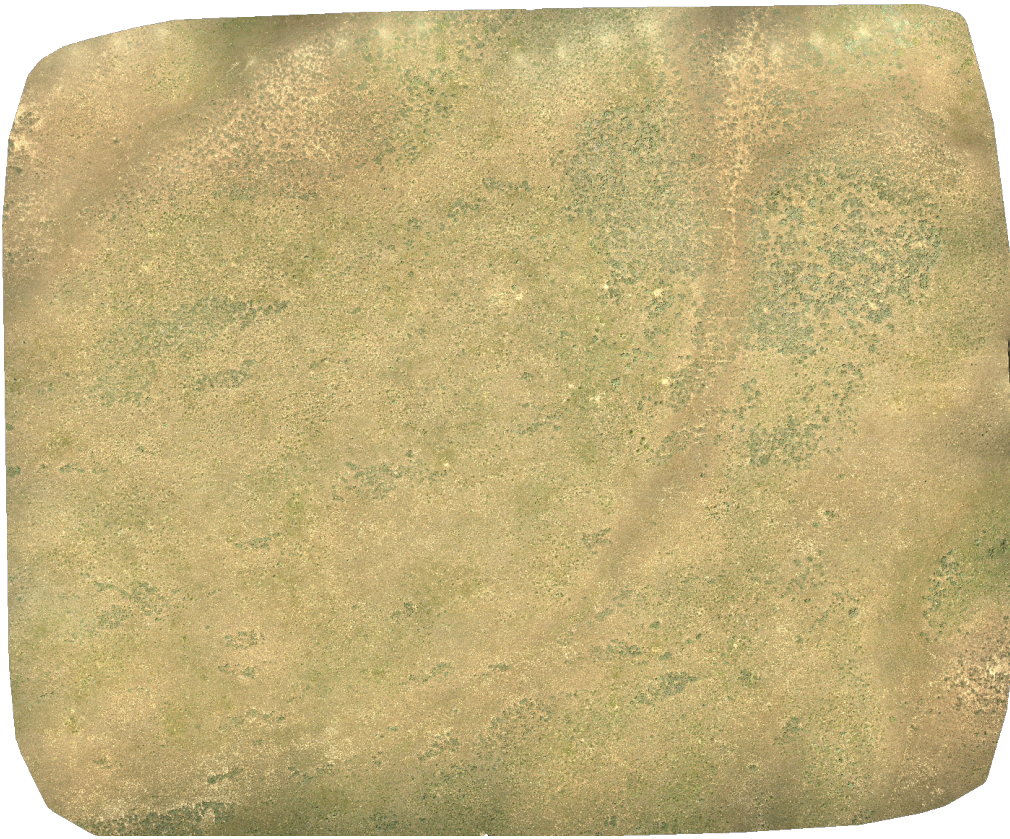
Date	17/08/2022 at 04:27:53
Area Covered	0.026966 km ²
Processing Time	21.0h:55.0m:19.0s
Capture Start	15/06/2022 at 06:01:46
Capture End	15/06/2022 at 07:18:05

Processing Summary

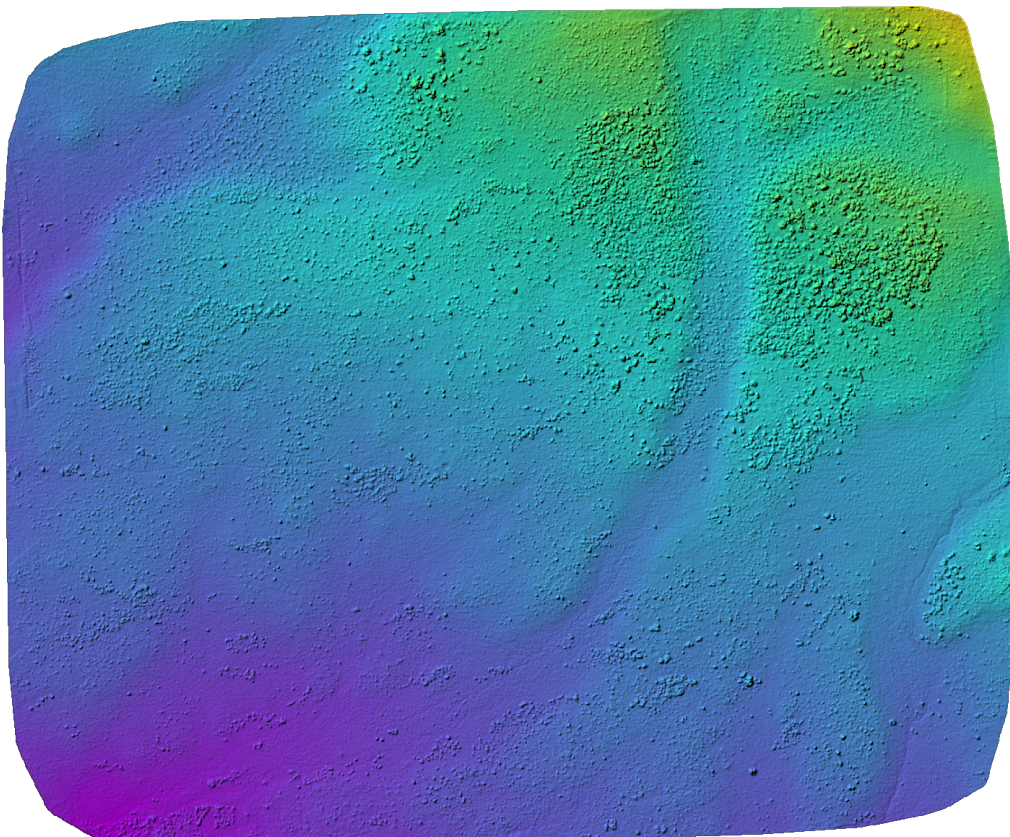
Reconstructed Images	484 over 488 shots (99.2%)
Reconstructed Points (Sparse)	6208469 over 6228245 points (99.7%)
Reconstructed Points (Dense)	484,471,711 points
Average Ground Sampling Distance (GSD)	1.0 cm
Detected Features	152,650 features
Reconstructed Features	59,215 features
Geographic Reference	GPS and GCP
GPS / GCP errors	14.99 / 0.03 meters



Previews



Orthophoto



Digital Surface Model



1,495.85m

1,502.36m

Survey Data



■ 2 ■ 3 ■ 4 ■ 5+

GPS/GCP/3D Errors Details

GPS	Mean	Sigma	RMS Error
X Error (meters)	-1.065	0.725	1.288
Y Error (meters)	-0.120	0.654	0.665
Z Error (meters)	-14.925	0.844	14.949
Total			14.994

GCP	Mean	Sigma	RMS Error
X Error (meters)	0.001	0.021	0.021
Y Error (meters)	0.006	0.021	0.022
Z Error (meters)	-0.006	0.013	0.014
Total			0.028

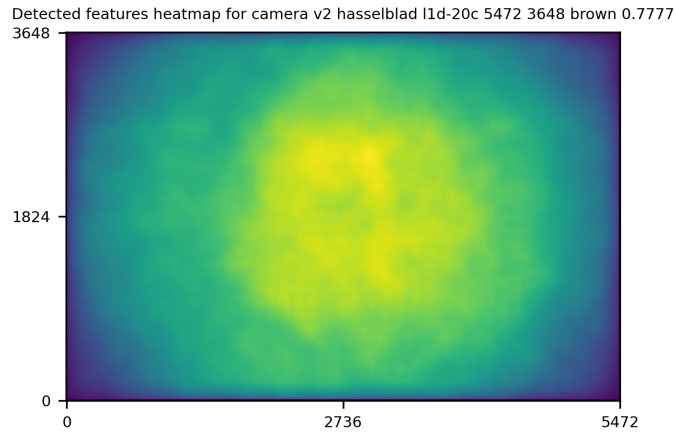
3D	Mean	Sigma	RMS Error
X Error (meters)	0.008	0.015	0.018
Y Error (meters)	0.010	0.025	0.027
Z Error (meters)	0.033	0.059	0.068
Total			0.037

	Absolute	Relative
Horizontal Accuracy CE90 (meters)	0.042	0.029
Vertical Accuracy LE90 (meters)	0.021	0.071

Ground Control Point Error

ID	Error X (m)	Error Y (m)	Error Z (m)
GCP-0	-0.016	-0.011	-0.015
GCP-1	-0.037	0.021	-0.012
GCP-2	0.004	0.026	0.021
GCP-3	0.043	0.050	-0.025
GCP-4	-0.010	-0.004	0.006
GCP-5	-0.006	-0.021	-0.005
GCP-6	0.013	-0.003	-0.010
GCP-7	0.013	0.004	0.004
GCP-8	0.002	-0.011	-0.015

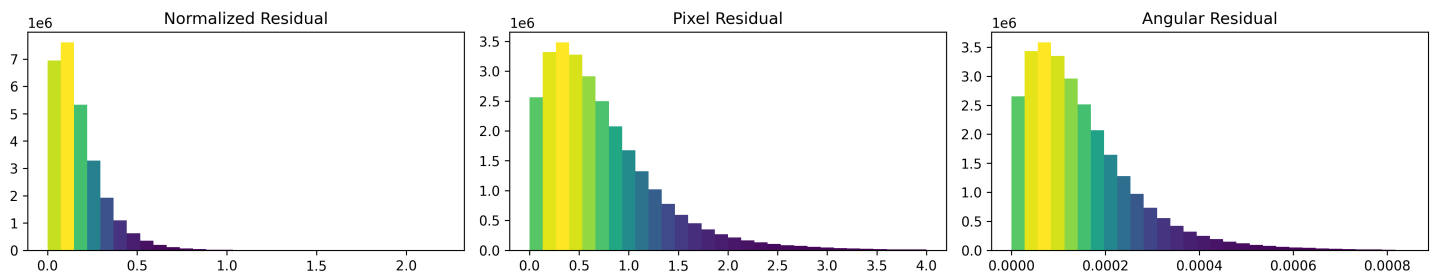
Features Details



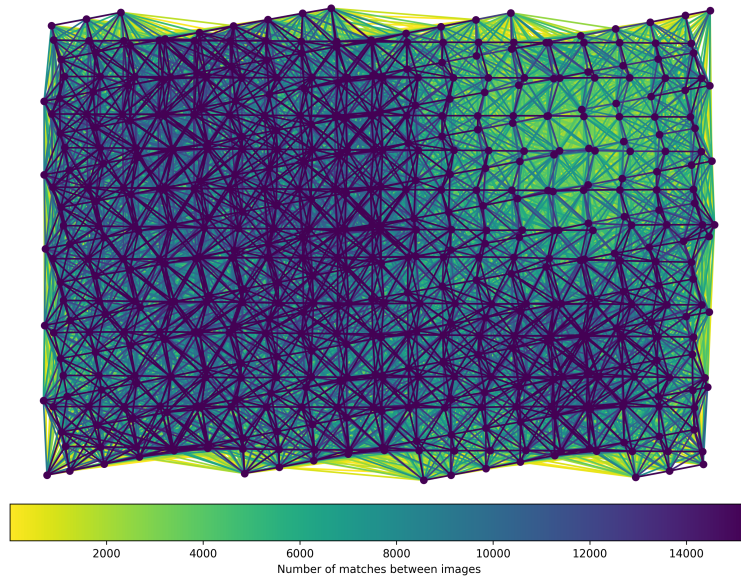
	Min.	Max.	Mean	Median
Detected	81475	232724	153786	152650
Reconstructed	27112	79638	57558	59215

Reconstruction Details

Average Reprojection Error (normalized / pixels / angular)	0.18 / 0.72 / 0.00015
Average Track Length	4.49 images
Average Track Length (> 2)	7.18 images



Tracks Details



Length	2	3	4	5	6	7	8	9	10
Count	3227218	1000734	492689	298675	204057	150435	115845	92856	76560

Camera Models Details

v2 hasselblad l1d-20c 5472 3648 brown 0.7777

	k1	k2	k3	p1	p2	focal	aspect_ratio	cx	cy
Initial	0.0000	0.0000	0.0000	0.0000	0.0000	0.7778	1.0000	0.0000	0.0000
Optimized	-0.2220	-0.0132	0.0632	0.0064	0.0037	0.8658	1.0000	-0.0091	-0.0251

