

ODM Quality Report

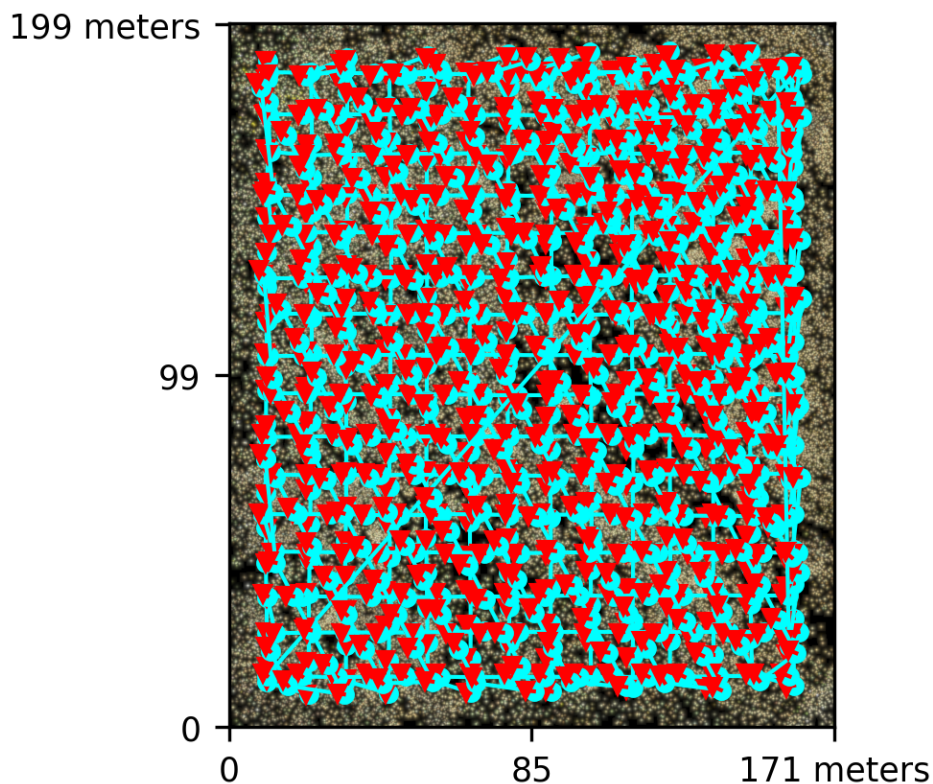
Processed with ODM version 2.8.8

Dataset Summary

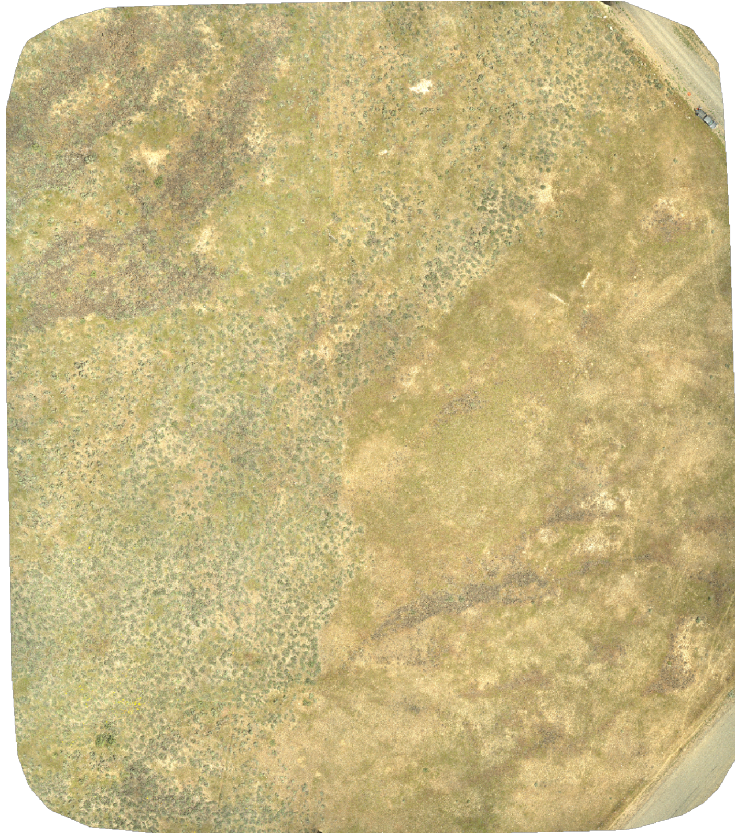
Date	20/08/2022 at 19:36:34
Area Covered	0.027920 km ²
Processing Time	96.0h:5.0m:7.0s
Capture Start	10/06/2022 at 05:37:19
Capture End	10/06/2022 at 07:34:32

Processing Summary

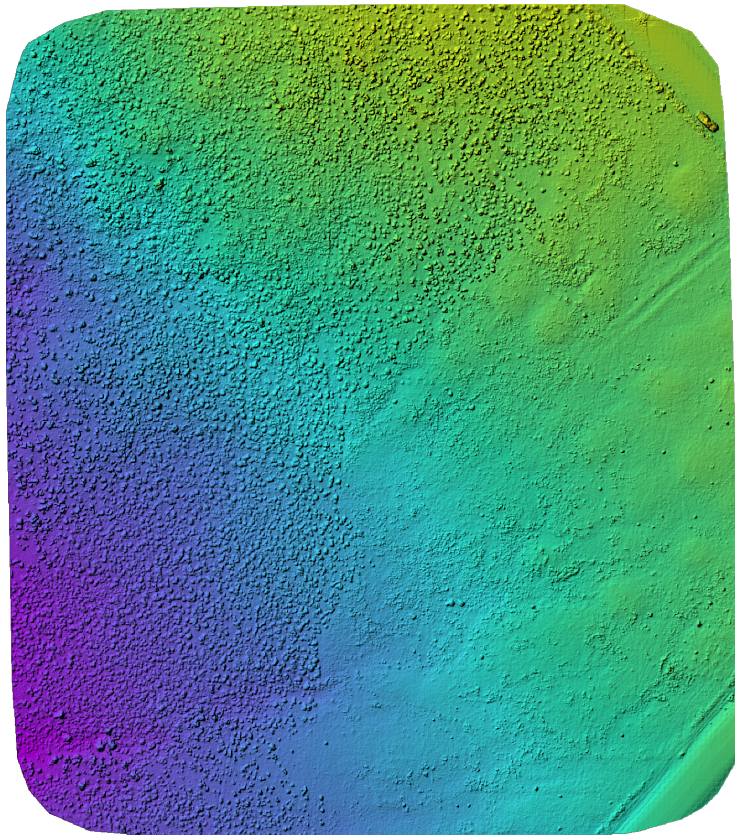
Reconstructed Images	814 over 814 shots (100.0%)
Reconstructed Points (Sparse)	5905882 over 6037583 points (97.8%)
Reconstructed Points (Dense)	917,972,662 points
Average Ground Sampling Distance (GSD)	1.1 cm
Detected Features	144,148 features
Reconstructed Features	27,177 features
Geographic Reference	GPS and GCP
GPS / GCP errors	9.34 / 0.01 meters



Previews



Orthophoto



Digital Surface Model



1,115.21m

1,126.83m

Survey Data



■ 2 ■ 3 ■ 4 ■ 5+

GPS/GCP/3D Errors Details

GPS	Mean	Sigma	RMS Error
X Error (meters)	1.415	0.570	1.526
Y Error (meters)	0.278	0.786	0.834
Z Error (meters)	-9.159	1.862	9.346
Total			9.340

GCP	Mean	Sigma	RMS Error
X Error (meters)	0.000	0.001	0.001
Y Error (meters)	-0.000	0.002	0.002
Z Error (meters)	-0.002	0.015	0.015
Total			0.009

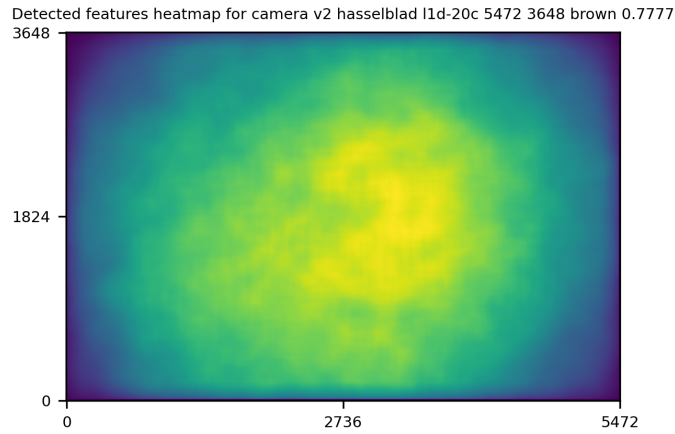
3D	Mean	Sigma	RMS Error
X Error (meters)	0.008	0.015	0.017
Y Error (meters)	0.008	0.013	0.015
Z Error (meters)	0.036	0.055	0.066
Total			0.039

	Absolute	Relative
Horizontal Accuracy CE90 (meters)	0.003	0.028
Vertical Accuracy LE90 (meters)	0.021	0.084

Ground Control Point Error

ID	Error X (m)	Error Y (m)	Error Z (m)
GCP-0	0.001	0.001	-0.002
GCP-1	0.001	-0.000	0.002
GCP-2	-0.000	0.000	0.001
GCP-3	-0.002	-0.002	-0.009
GCP-4	-0.002	0.003	-0.000
GCP-5	0.000	-0.004	-0.037
GCP-6	0.002	-0.002	0.008
GCP-7	0.002	0.000	0.021
GCP-8	-0.000	-0.000	0.000

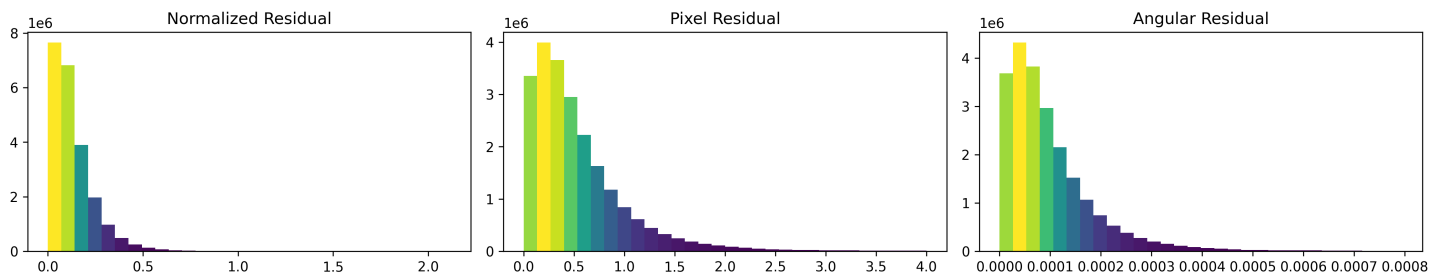
Features Details



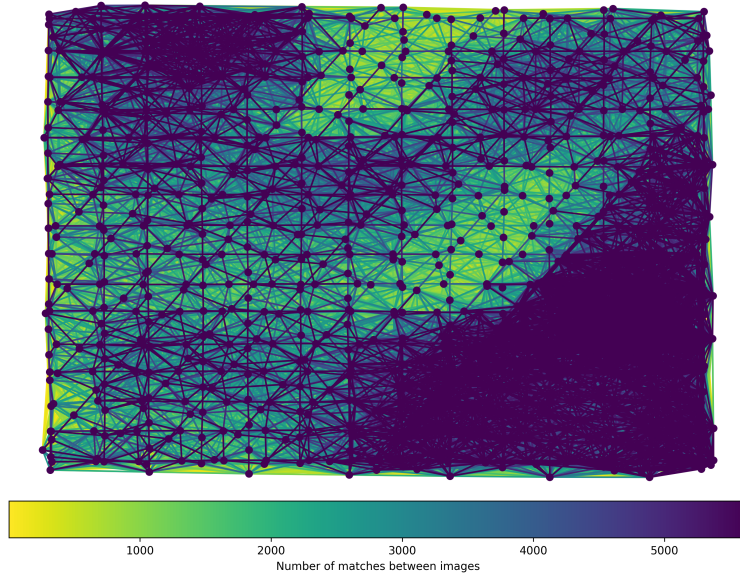
	Min.	Max.	Mean	Median
Detected	80097	261781	148568	144148
Reconstructed	9036	55738	27583	27177

Reconstruction Details

Average Reprojection Error (normalized / pixels / angular)	0.13 / 0.54 / 0.00010
Average Track Length	3.80 images
Average Track Length (> 2)	6.81 images



Tracks Details



Length	2	3	4	5	6	7	8	9	10
Count	3693625	915243	386529	209058	131798	90541	66559	51353	41474

Camera Models Details

v2 hasselblad l1d-20c 5472 3648 brown 0.7777

	k1	k2	k3	p1	p2	focal	aspect_ratio	cx	cy
Initial	0.0000	0.0000	0.0000	0.0000	0.0000	0.7778	1.0000	0.0000	0.0000
Optimized	-0.2895	-0.0174	0.1181	0.0107	0.0021	0.9851	1.0000	-0.0012	-0.0371

