

ODM Quality Report

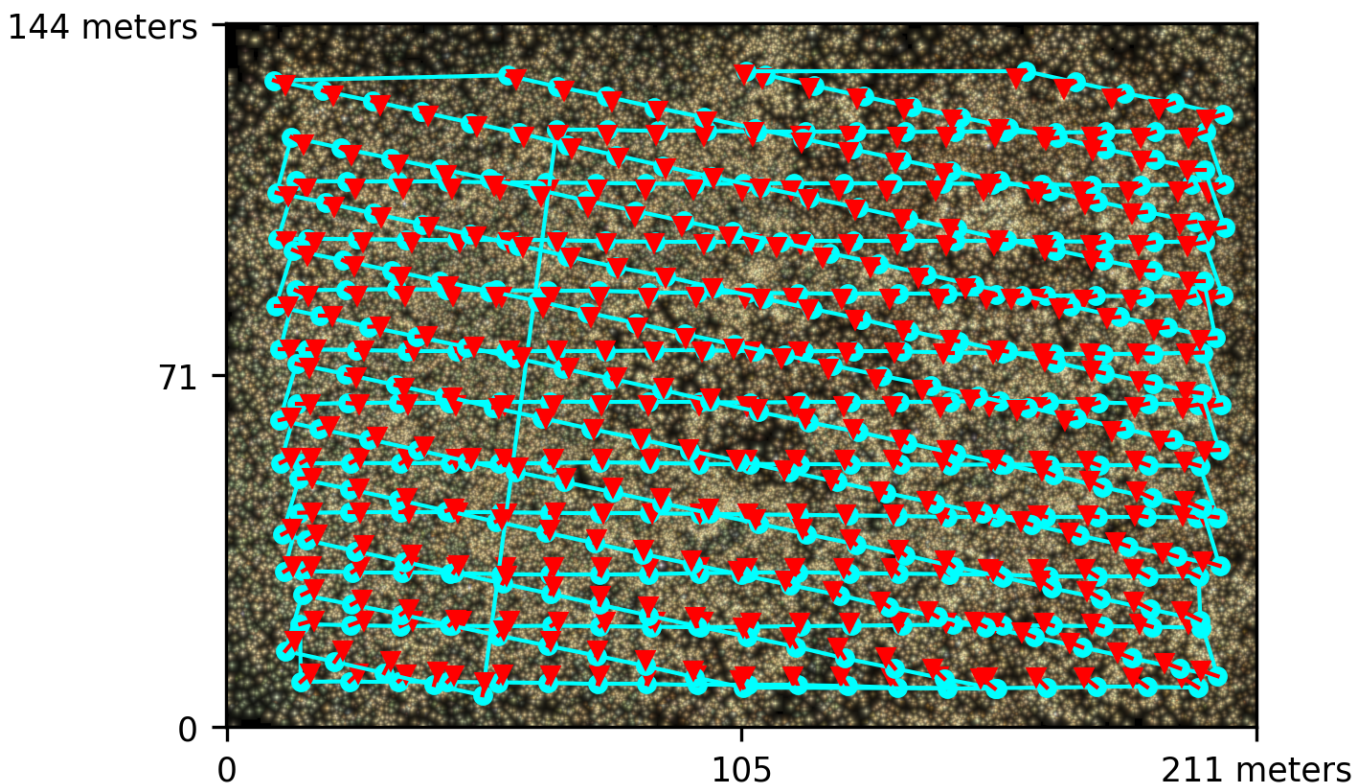
Processed with ODM version 2.8.4

Dataset Summary

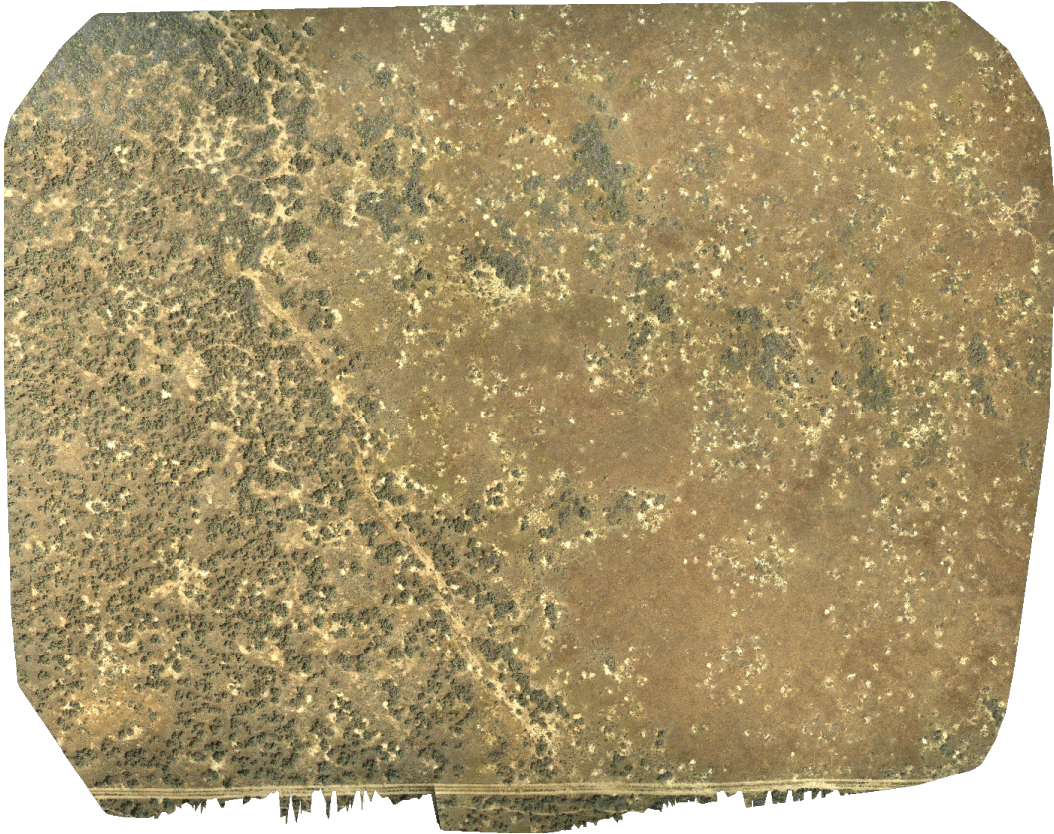
Date	29/06/2022 at 22:22:24
Area Covered	0.024828 km ²
Processing Time	9.0h:39.0m:29.0s
Capture Start	03/06/2022 at 10:53:32
Capture End	03/06/2022 at 11:47:18

Processing Summary

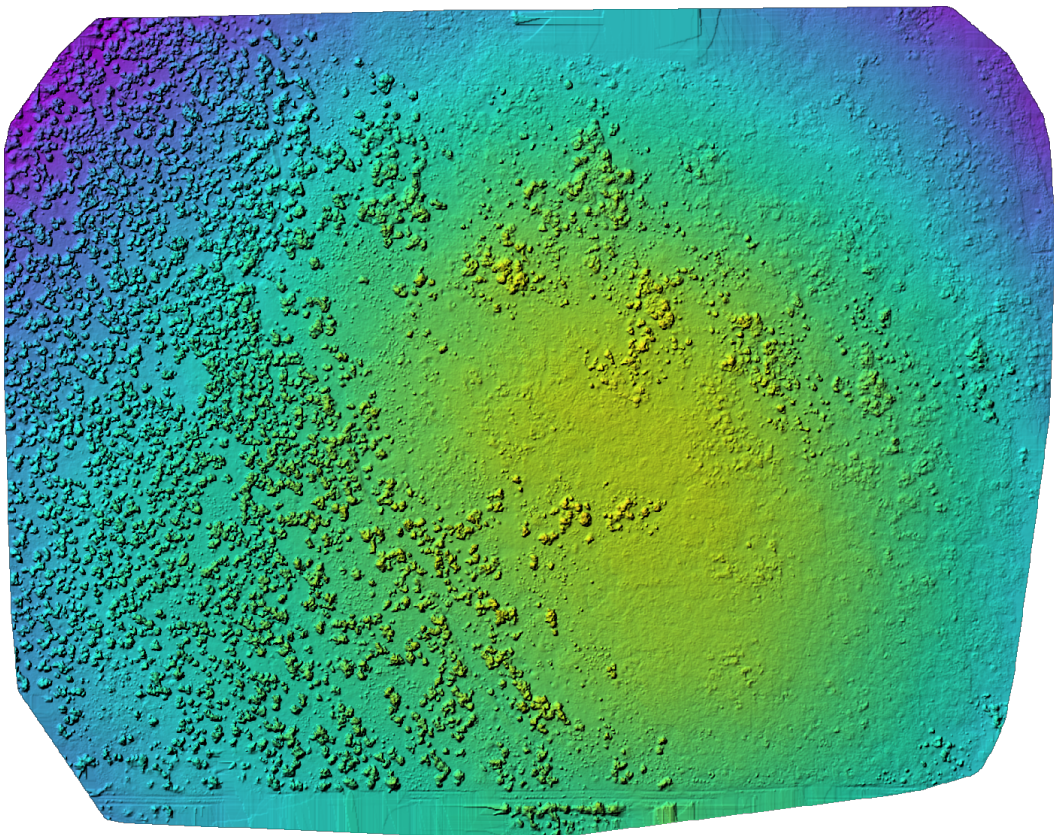
Reconstructed Images	435 over 436 shots (99.8%)
Reconstructed Points (Sparse)	4093687 over 4160795 points (98.4%)
Reconstructed Points (Dense)	300,027,282 points
Average Ground Sampling Distance (GSD)	1.0 cm
Detected Features	143,778 features
Reconstructed Features	38,462 features
Geographic Reference	GPS and GCP
GPS / GCP errors	8.88 / 0.62 meters



Previews



Orthophoto



Digital Surface Model



836.56m

844.57m

Survey Data



■ 2 ■ 3 ■ 4 ■ 5+

GPS/GCP/3D Errors Details

GPS	Mean	Sigma	RMS Error
X Error (meters)	0.471	1.707	1.770
Y Error (meters)	0.172	0.983	0.998
Z Error (meters)	-8.653	1.749	8.829
Total			8.884

GCP	Mean	Sigma	RMS Error
X Error (meters)	-0.001	0.023	0.023
Y Error (meters)	-0.002	0.024	0.025
Z Error (meters)	0.023	0.704	0.704
Total			0.624

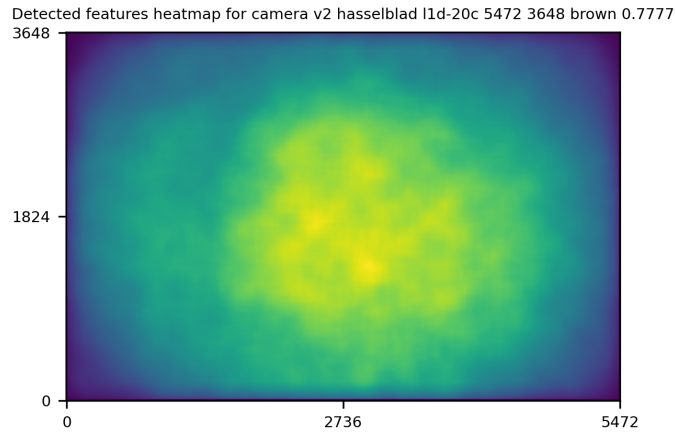
3D	Mean	Sigma	RMS Error
X Error (meters)	0.003	0.004	0.006
Y Error (meters)	0.004	0.008	0.009
Z Error (meters)	0.017	0.026	0.031
Total			0.018

	Absolute	Relative
Horizontal Accuracy CE90 (meters)	0.049	0.012
Vertical Accuracy LE90 (meters)	1.047	0.037

Ground Control Point Error

ID	Error X (m)	Error Y (m)	Error Z (m)
GCP-0	0.028	-0.006	-0.119
GCP-1	-0.006	-0.010	-0.793
GCP-2	0.000	0.014	1.047
GCP-3	-0.041	-0.007	0.886
GCP-4	0.024	-0.043	-0.275
GCP-5	-0.009	0.038	-0.611

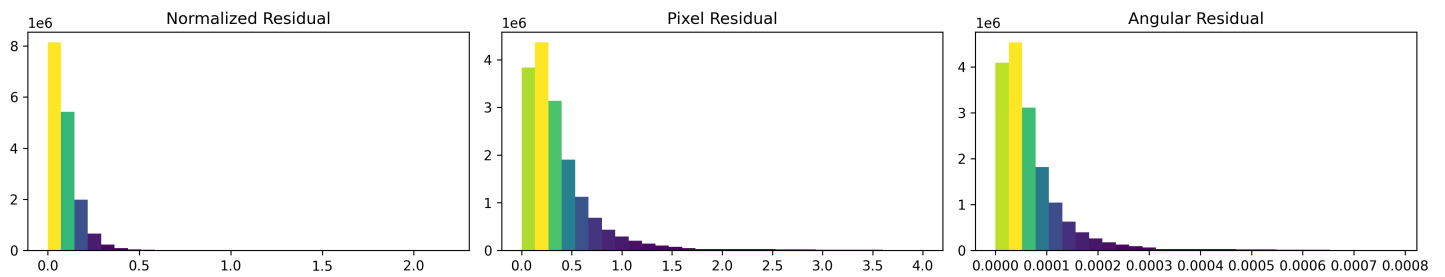
Features Details



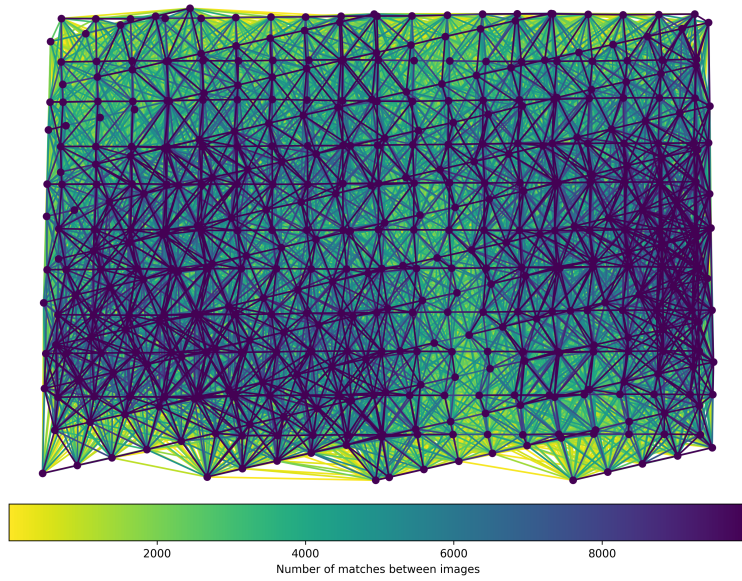
	Min.	Max.	Mean	Median
Detected	80164	282134	152431	143778
Reconstructed	8833	81017	38373	38462

Reconstruction Details

Average Reprojection Error (normalized / pixels / angular)	0.09 / 0.38 / 0.00007
Average Track Length	4.08 images
Average Track Length (> 2)	6.76 images



Tracks Details



Length	2	3	4	5	6	7	8	9	10
Count	2305895	627182	301904	182388	123743	90722	69772	55271	45254

Camera Models Details

v2 hasselblad l1d-20c 5472 3648 brown 0.7777

	k1	k2	k3	p1	p2	focal	aspect_ratio	cx	cy
Initial	0.0000	0.0000	0.0000	0.0000	0.0000	0.7778	1.0000	0.0000	0.0000
Optimized	-0.2672	-0.0286	0.1147	0.0088	0.0023	0.9706	1.0000	-0.0033	-0.0341

