

ODM Quality Report

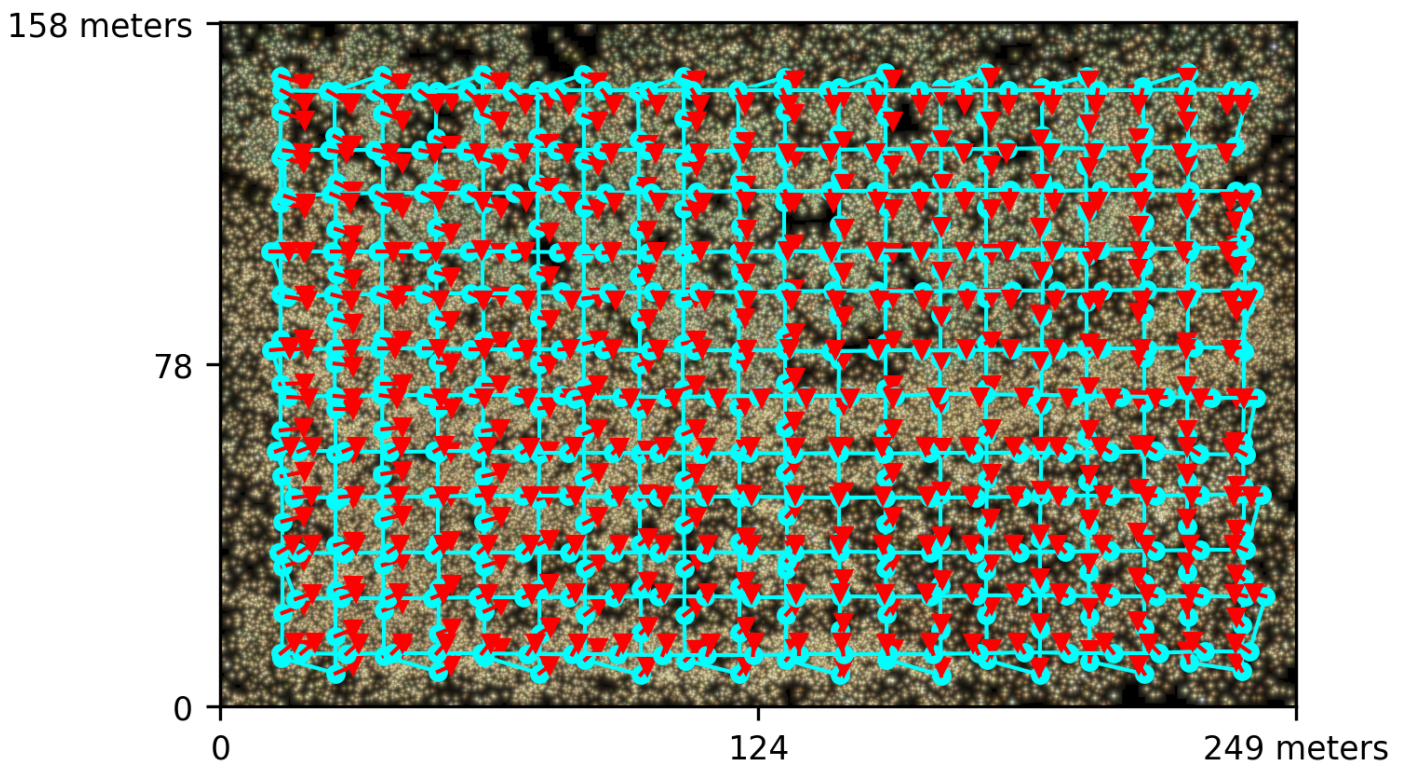
Processed with ODM version 2.8.4

Dataset Summary

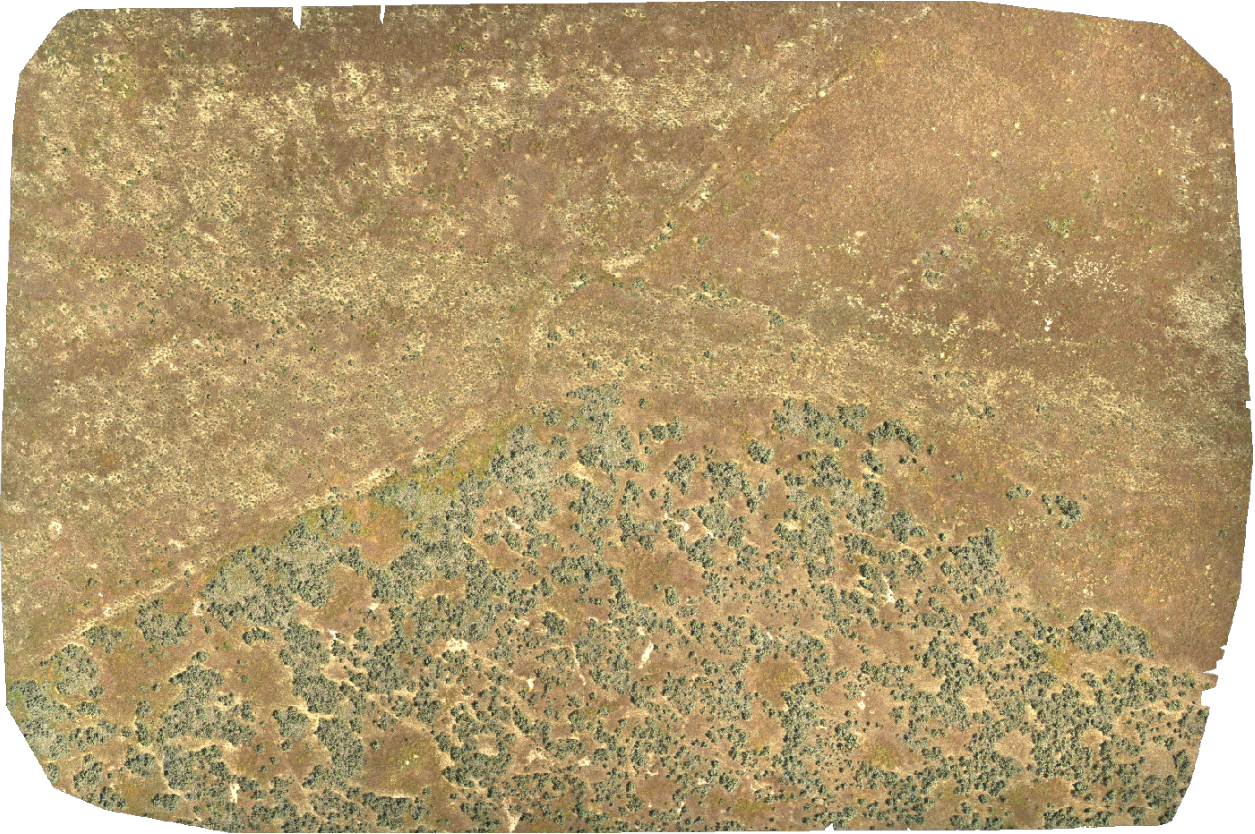
Date	14/06/2022 at 22:39:21
Area Covered	0.032065 km ²
Processing Time	5.0h:38.0m:17.0s
Capture Start	24/05/2022 at 10:19:08
Capture End	24/05/2022 at 11:39:33

Processing Summary

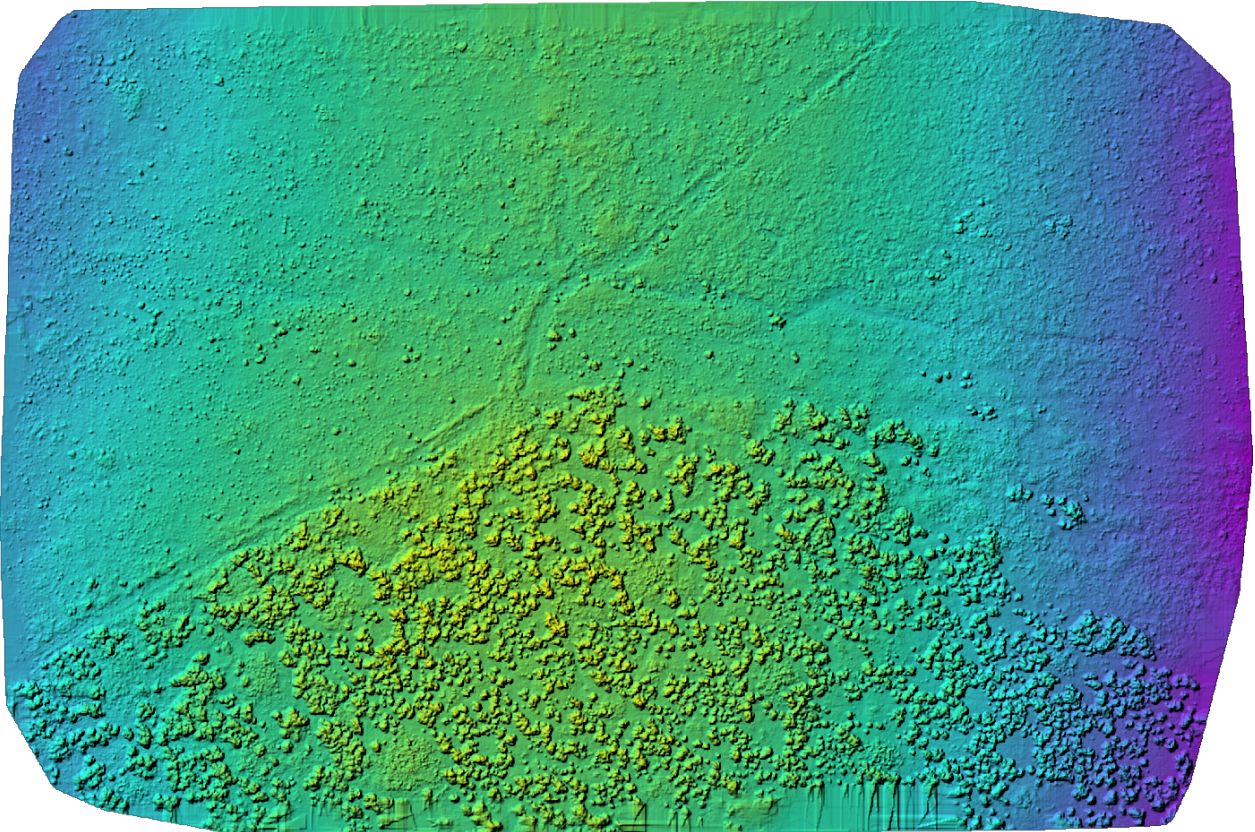
Reconstructed Images	554 over 557 shots (99.5%)
Reconstructed Points (Sparse)	3002757 over 3060281 points (98.1%)
Reconstructed Points (Dense)	382,983,396 points
Average Ground Sampling Distance (GSD)	1.1 cm
Detected Features	140,727 features
Reconstructed Features	17,365 features
Geographic Reference	GPS and GCP
GPS / GCP errors	8.25 / 0.75 meters



Previews



Orthophoto



Digital Surface Model



913.03m

920.34m

Survey Data



■ 2 ■ 3 ■ 4 ■ 5+

GPS/GCP/3D Errors Details

GPS	Mean	Sigma	RMS Error
X Error (meters)	-1.366	2.003	2.425
Y Error (meters)	0.137	1.464	1.470
Z Error (meters)	-7.771	1.927	8.007
Total			8.249

GCP	Mean	Sigma	RMS Error
X Error (meters)	0.001	0.026	0.026
Y Error (meters)	-0.002	0.022	0.022
Z Error (meters)	0.011	0.814	0.814
Total			0.746

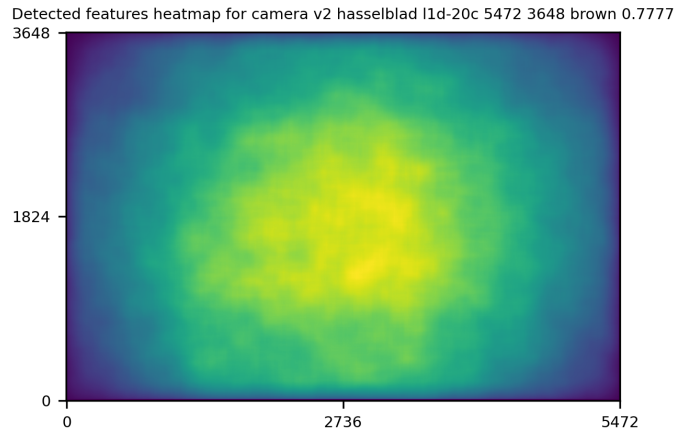
3D	Mean	Sigma	RMS Error
X Error (meters)	0.006	0.015	0.016
Y Error (meters)	0.006	0.012	0.013
Z Error (meters)	0.025	0.052	0.058
Total			0.027

	Absolute	Relative
Horizontal Accuracy CE90 (meters)	0.050	0.017
Vertical Accuracy LE90 (meters)	1.078	0.058

Ground Control Point Error

ID	Error X (m)	Error Y (m)	Error Z (m)
GCP-0	-0.033	-0.030	-1.063
GCP-1	0.002	-0.009	0.220
GCP-2	-0.026	0.028	-0.566
GCP-3	0.051	-0.002	1.078
GCP-4	0.015	0.002	1.105
GCP-5	0.022	0.017	0.667
GCP-6	-0.026	-0.042	-1.076
GCP-7	0.011	-0.006	0.334
GCP-8	-0.003	0.026	-0.601

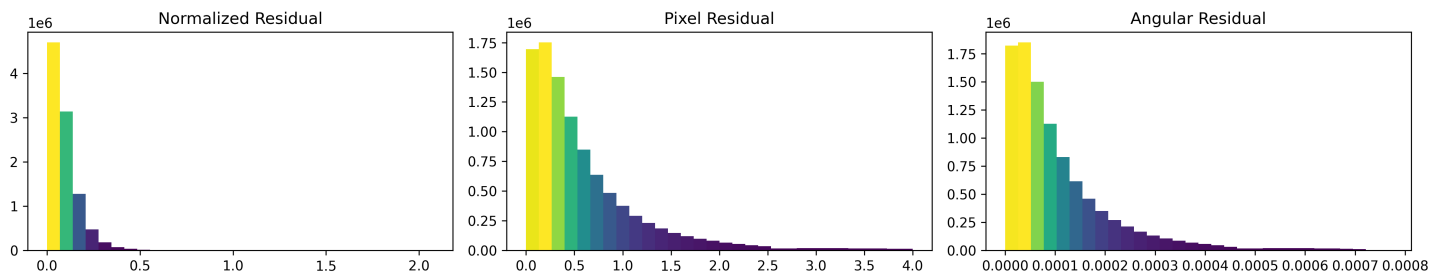
Features Details



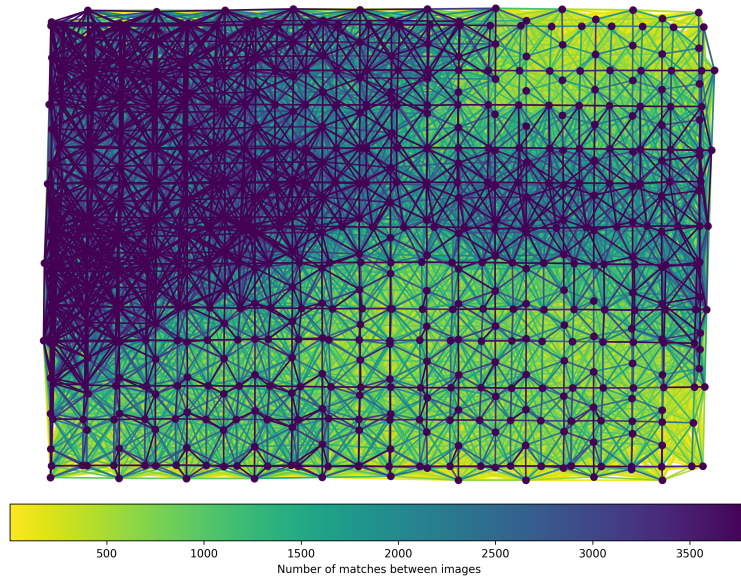
	Min.	Max.	Mean	Median
Detected	81371	245237	142495	140727
Reconstructed	4214	34351	18180	17365

Reconstruction Details

Average Reprojection Error (normalized / pixels / angular)	0.09 / 0.59 / 0.00011
Average Track Length	3.35 images
Average Track Length (> 2)	5.95 images



Tracks Details



Length	2	3	4	5	6	7	8	9	10
Count	1974612	445710	184913	99379	61709	42248	31102	23290	18884

Camera Models Details

v2 hasselblad l1d-20c 5472 3648 brown 0.7777

	k1	k2	k3	p1	p2	focal	aspect_ratio	cx	cy
Initial	0.0000	0.0000	0.0000	0.0000	0.0000	0.7778	1.0000	0.0000	0.0000
Optimized	-0.2823	-0.0378	0.1448	0.0106	0.0019	1.0000	1.0000	-0.0012	-0.0393

