

# ODM Quality Report

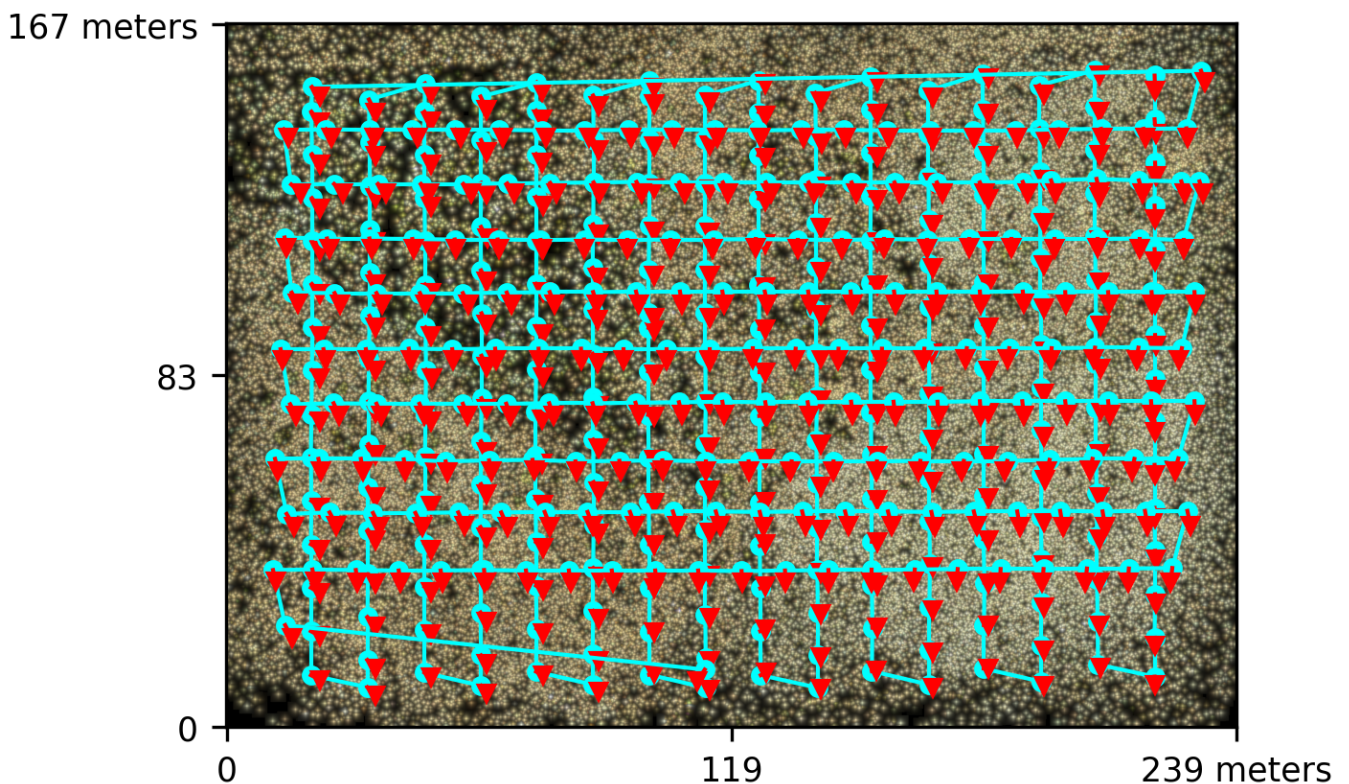
Processed with ODM version 2.8.4

## Dataset Summary

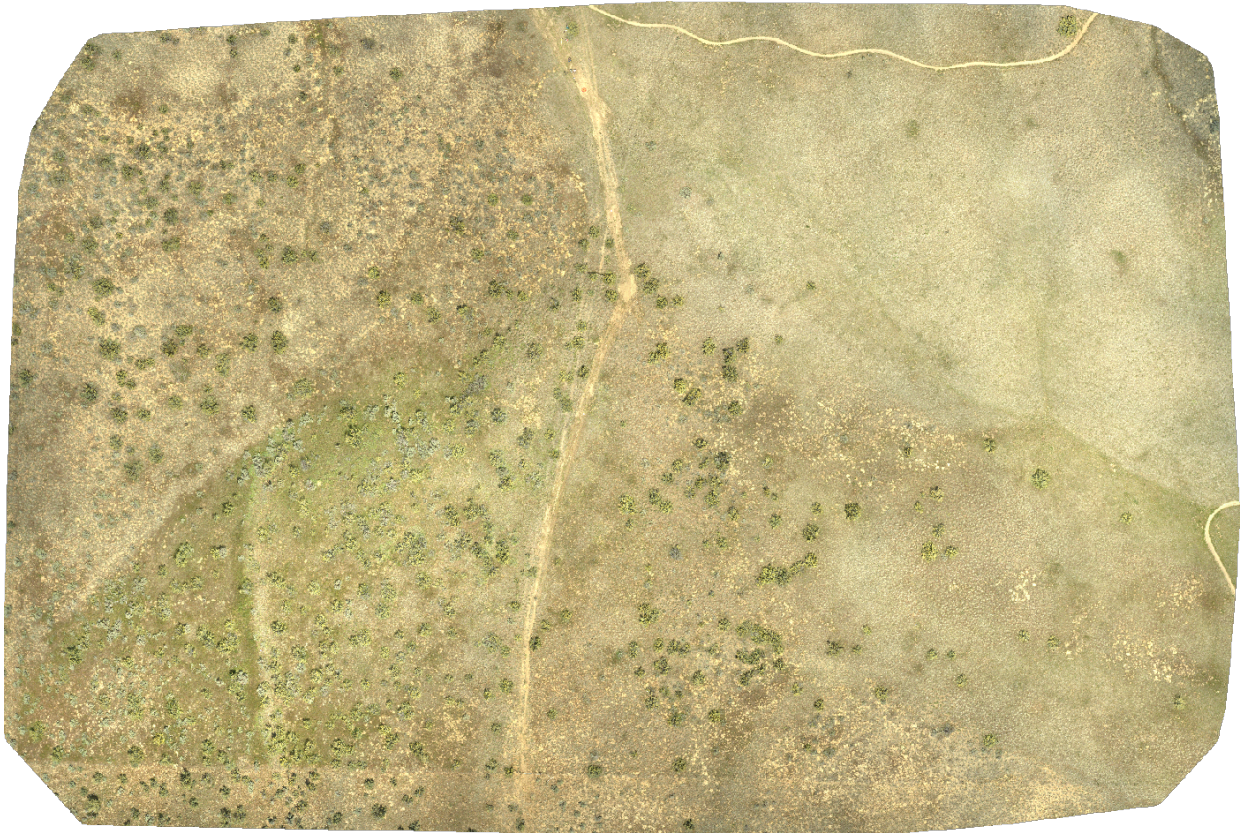
Date	01/06/2022 at 20:38:53
Area Covered	0.032215 km <sup>2</sup>
Processing Time	5.0h:21.0m:33.0s
Capture Start	20/05/2022 at 12:41:22
Capture End	20/05/2022 at 13:37:08

## Processing Summary

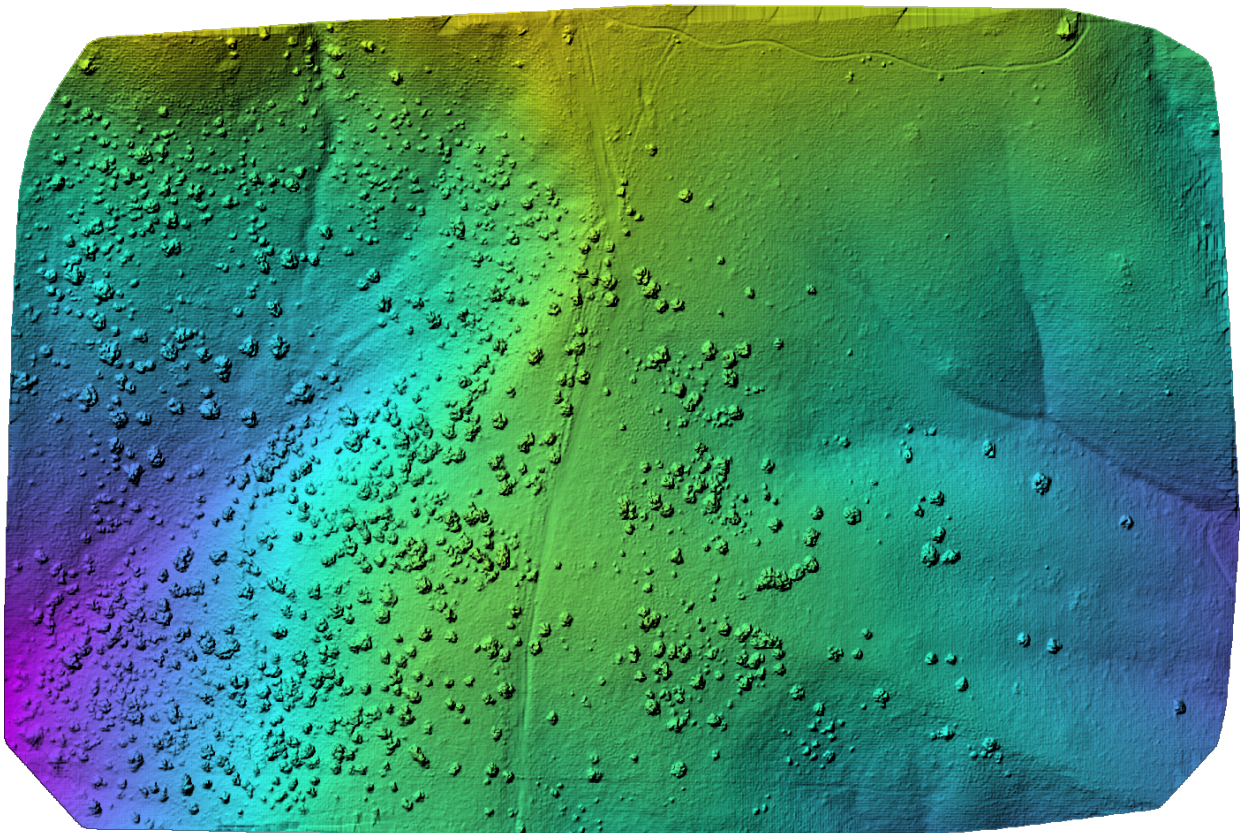
Reconstructed Images	443 over 445 shots (99.6%)
Reconstructed Points (Sparse)	2824919 over 2854359 points (99.0%)
Reconstructed Points (Dense)	110,369,324 points
Average Ground Sampling Distance (GSD)	1.0 cm
Detected Features	99,187 features
Reconstructed Features	25,654 features
Geographic Reference	GPS and GCP
GPS / GCP errors	7.68 / 1.10 meters



# Previews



Orthophoto



Digital Surface Model



1,001.14m

1,047.72m

# Survey Data



■ 2 ■ 3 ■ 4 ■ 5+

## GPS/GCP/3D Errors Details

GPS	Mean	Sigma	RMS Error
X Error (meters)	-0.874	0.621	1.072
Y Error (meters)	-1.899	0.930	2.114
Z Error (meters)	-7.300	1.780	7.514
Total			7.685

GCP	Mean	Sigma	RMS Error
X Error (meters)	-0.003	0.021	0.021
Y Error (meters)	-0.008	0.048	0.049
Z Error (meters)	-0.143	1.313	1.320
Total			1.101

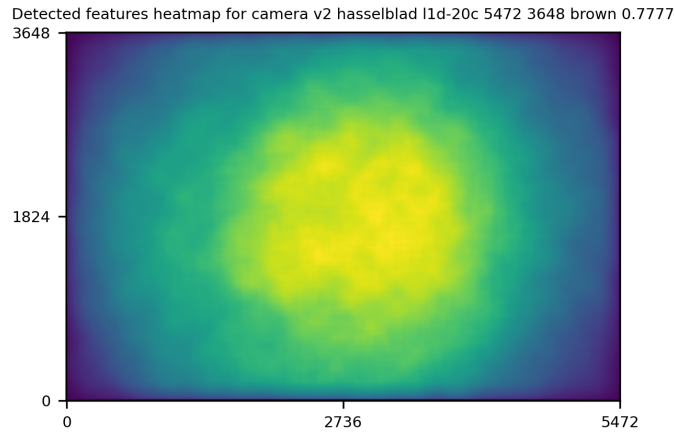
3D	Mean	Sigma	RMS Error
X Error (meters)	0.008	0.014	0.016
Y Error (meters)	0.008	0.014	0.016
Z Error (meters)	0.034	0.051	0.062
Total			0.037

	Absolute	Relative
Horizontal Accuracy CE90 (meters)	0.085	0.027
Vertical Accuracy LE90 (meters)	1.721	0.082

## Ground Control Point Error

ID	Error X (m)	Error Y (m)	Error Z (m)
GCP-0	0.004	-0.008	1.354
GCP-1	-0.000	0.002	1.301
GCP-2	0.037	0.077	1.576
GCP-3	-0.004	-0.004	-0.328
GCP-4	-0.018	0.002	0.076
GCP-5	0.003	-0.122	-2.409
GCP-6	0.015	0.003	-1.721
GCP-7	-0.040	-0.001	-0.844
GCP-8	-0.021	-0.017	-0.289

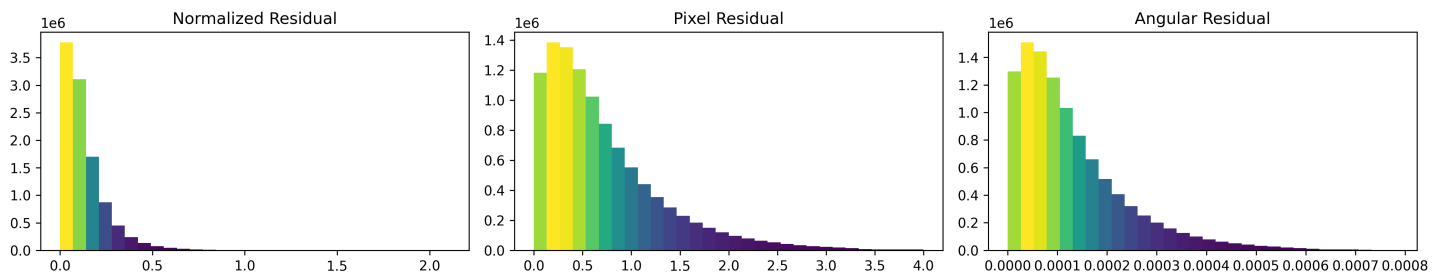
# Features Details



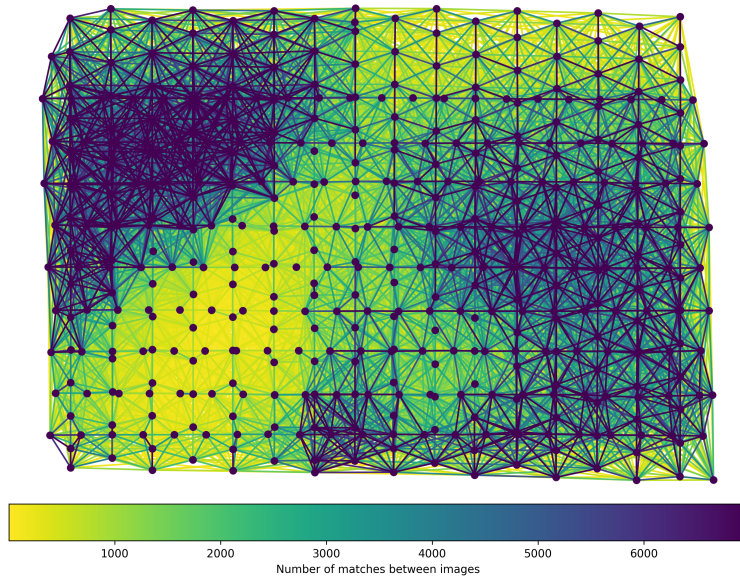
	Min.	Max.	Mean	Median
Detected	40094	196890	95493	99187
Reconstructed	2210	53085	23911	25654

# Reconstruction Details

Average Reprojection Error (normalized / pixels / angular)	0.13 / 0.71 / 0.00013
Average Track Length	3.75 images
Average Track Length (> 2)	6.02 images



# Tracks Details



Length	2	3	4	5	6	7	8	9	10
Count	1596425	458538	217684	129555	86868	63167	47671	37505	30234

# Camera Models Details

**v2 hasselblad l1d-20c 5472 3648 brown 0.7777**

	k1	k2	k3	p1	p2	focal	aspect_ratio	cx	cy
Initial	0.0000	0.0000	0.0000	0.0000	0.0000	0.7778	1.0000	0.0000	0.0000
Optimized	-0.2940	-0.0273	0.1446	0.0107	0.0041	1.0030	1.0000	-0.0063	-0.0367

