

ODM Quality Report

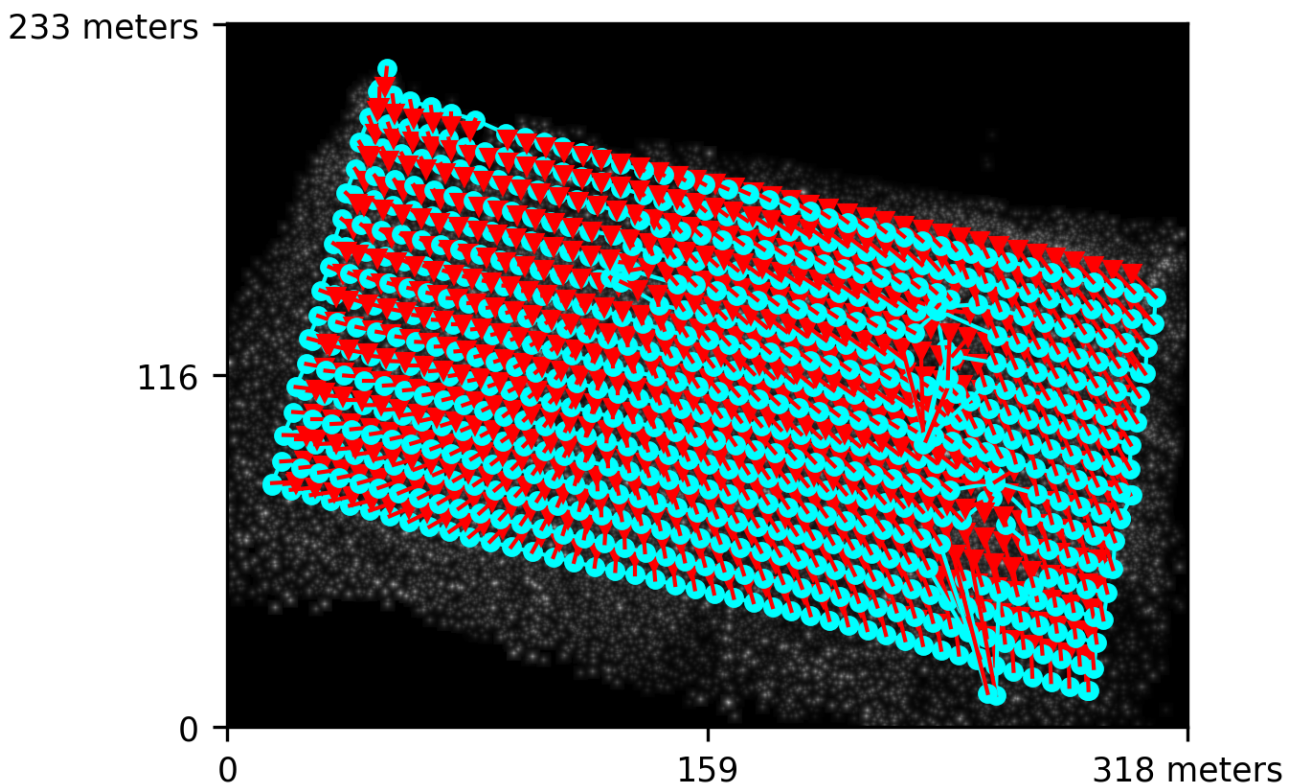
Processed with ODM version 2.8.8

Dataset Summary

Date	09/11/2022 at 16:43:41
Area Covered	0.060955 km ²
Processing Time	2.0h:35.0m:17.0s
Capture Start	29/06/2022 at 06:21:50
Capture End	29/06/2022 at 07:02:12

Processing Summary

Reconstructed Images	726 over 728 shots (99.7%)
Reconstructed Points (Sparse)	784543 over 821322 points (95.5%)
Reconstructed Points (Dense)	15,450,283 points
Average Ground Sampling Distance (GSD)	2.6 cm
Detected Features	9,529 features
Reconstructed Features	5,027 features
Geographic Reference	GPS and GCP
GPS / GCP errors	12.33 / 14.10 meters

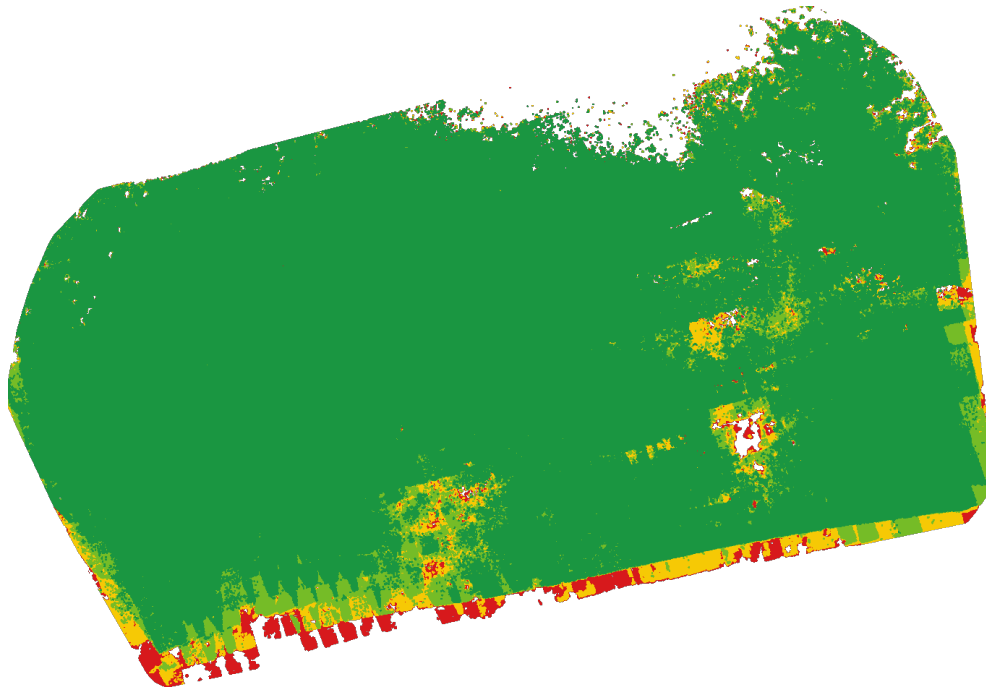


Previews



Orthophoto

Survey Data



■ 2 ■ 3 ■ 4 ■ 5+

GPS/GCP/3D Errors Details

GPS	Mean	Sigma	RMS Error
X Error (meters)	1.045	4.022	4.155
Y Error (meters)	3.967	5.035	6.410
Z Error (meters)	-10.308	6.668	12.276
Total			12.326

GCP	Mean	Sigma	RMS Error
X Error (meters)	0.333	2.182	2.207
Y Error (meters)	-6.066	10.193	11.861
Z Error (meters)	-9.466	5.329	10.863
Total			14.095

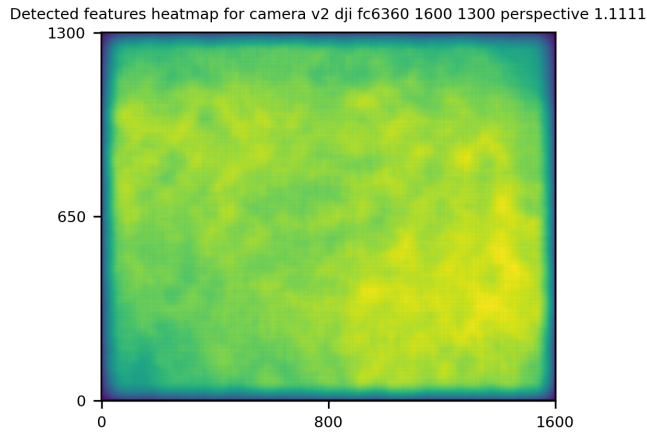
3D	Mean	Sigma	RMS Error
X Error (meters)	0.060	0.335	0.341
Y Error (meters)	0.064	0.305	0.312
Z Error (meters)	0.238	0.654	0.696
Total			0.264

	Absolute	Relative
Horizontal Accuracy CE90 (meters)	22.381	0.155
Vertical Accuracy LE90 (meters)	16.133	0.487

Ground Control Point Error

ID	Error X (m)	Error Y (m)	Error Z (m)
GCP-1	1.769	1.720	-13.369
GCP-2	0.077	0.070	-0.710
GCP-3	4.981	-20.557	-9.396
GCP-4	-1.019	1.168	-18.896
GCP-5	-0.635	-23.602	-6.384
GCP-6	-2.001	-0.719	-10.681
GCP-7	-0.842	-0.539	-6.829

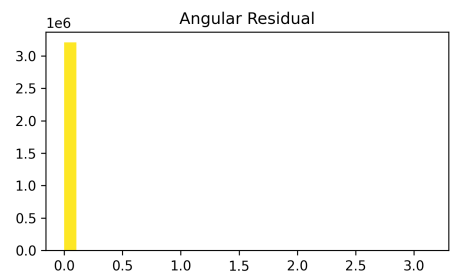
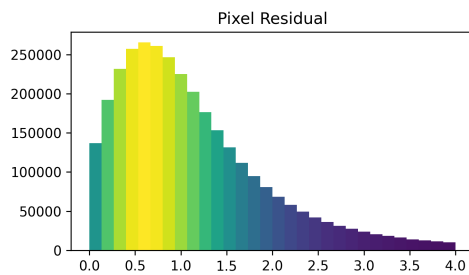
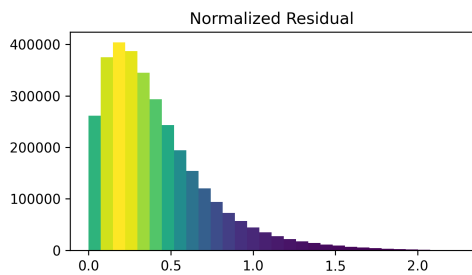
Features Details



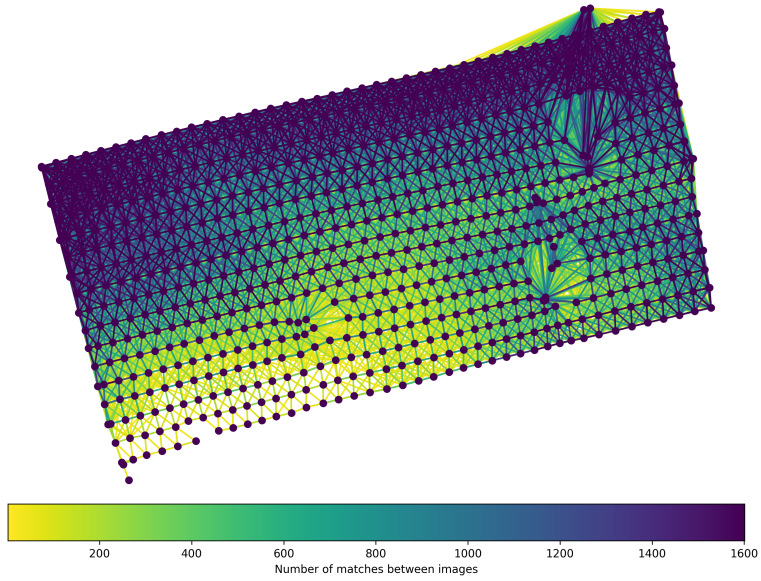
	Min.	Max.	Mean	Median
Detected	8657	10741	9593	9529
Reconstructed	50	7390	4693	5027

Reconstruction Details

Average Reprojection Error (normalized / pixels / angular)	0.41 / 1.12 / 0.00058
Average Track Length	4.34 images
Average Track Length (> 2)	6.42 images



Tracks Details



Length	2	3	4	5	6	7	8	9	10
Count	368976	136032	73000	46426	32397	23833	18306	14319	11505

Camera Models Details

v2 dji fc6360 1600 1300 perspective 1.1111

	k1	k2	focal
Initial	0.0000	0.0000	1.1111
Optimized	-0.3294	0.0238	1.2152

