

ODM Quality Report

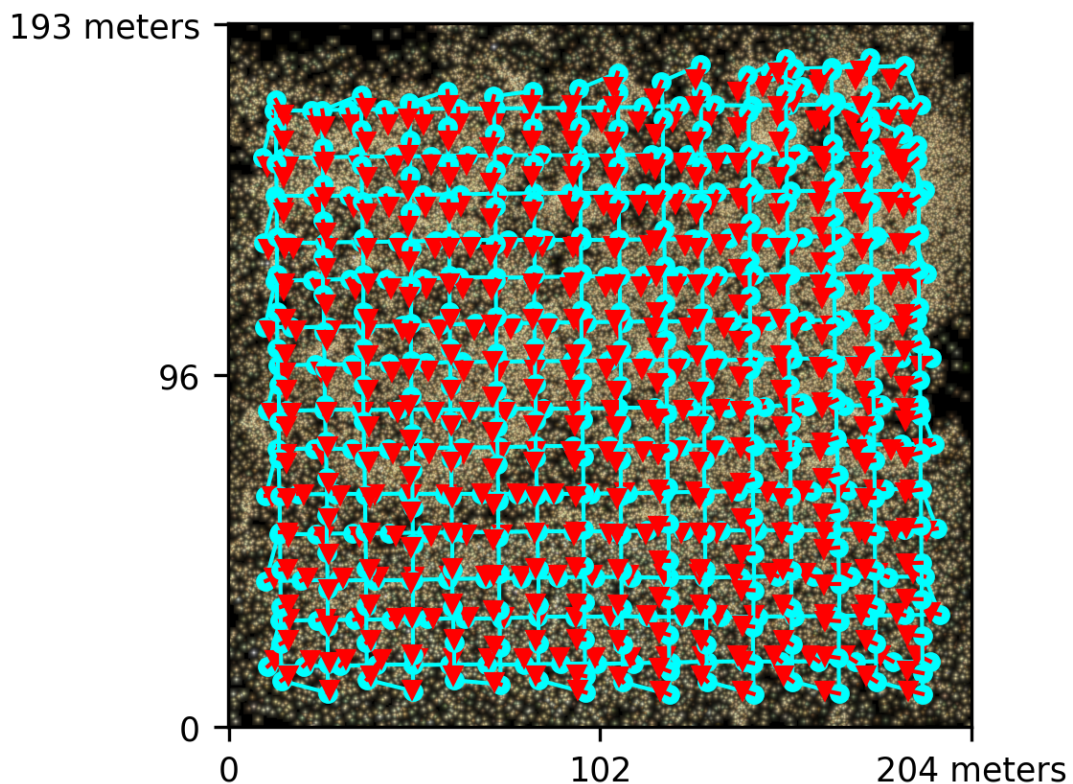
Processed with ODM version 2.8.4

Dataset Summary

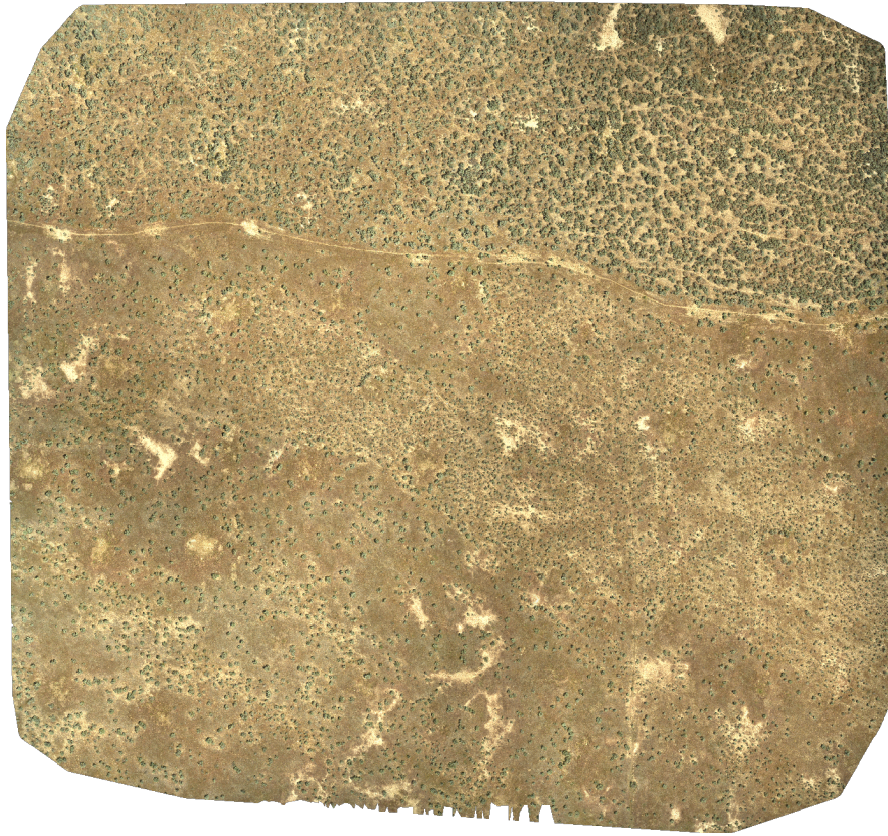
Date	22/06/2022 at 23:04:45
Area Covered	0.032581 km ²
Processing Time	11.0h:35.0m:32.0s
Capture Start	25/05/2022 at 11:05:59
Capture End	25/05/2022 at 12:10:30

Processing Summary

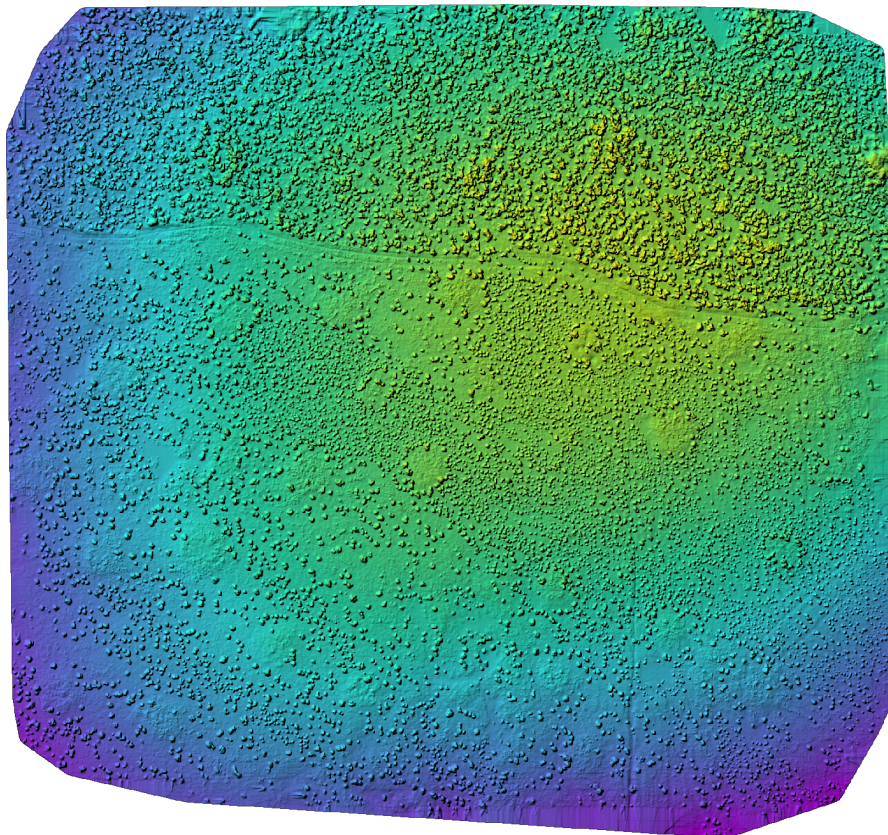
Reconstructed Images	557 over 560 shots (99.5%)
Reconstructed Points (Sparse)	5371515 over 5501928 points (97.6%)
Reconstructed Points (Dense)	362,572,234 points
Average Ground Sampling Distance (GSD)	1.0 cm
Detected Features	152,259 features
Reconstructed Features	33,830 features
Geographic Reference	GPS and GCP
GPS / GCP errors	7.18 / 1.05 meters



Previews



Orthophoto



Digital Surface Model



1,018.74m

1,027.59m

Survey Data



■ 2 ■ 3 ■ 4 ■ 5+

GPS/GCP/3D Errors Details

GPS	Mean	Sigma	RMS Error
X Error (meters)	1.066	1.711	2.016
Y Error (meters)	-1.353	1.613	2.106
Z Error (meters)	-6.581	2.184	6.934
Total			7.183

GCP	Mean	Sigma	RMS Error
X Error (meters)	-0.001	0.036	0.036
Y Error (meters)	0.003	0.032	0.032
Z Error (meters)	-0.005	1.071	1.071
Total			1.047

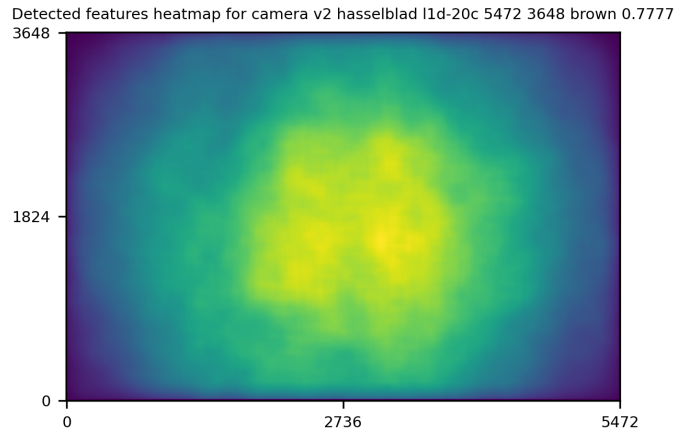
3D	Mean	Sigma	RMS Error
X Error (meters)	0.005	0.010	0.012
Y Error (meters)	0.005	0.013	0.014
Z Error (meters)	0.025	0.046	0.052
Total			0.027

	Absolute	Relative
Horizontal Accuracy CE90 (meters)	0.072	0.018
Vertical Accuracy LE90 (meters)	1.337	0.061

Ground Control Point Error

ID	Error X (m)	Error Y (m)	Error Z (m)
GCP-0	0.018	0.035	-1.097
GCP-1	0.029	-0.050	-1.337
GCP-2	-0.060	0.039	-1.385
GCP-3	0.074	0.056	-0.911
GCP-4	-0.027	0.003	1.088
GCP-5	-0.010	-0.013	0.750
GCP-6	-0.020	-0.014	1.239
GCP-7	0.005	-0.011	0.731
GCP-8	-0.015	-0.017	0.880

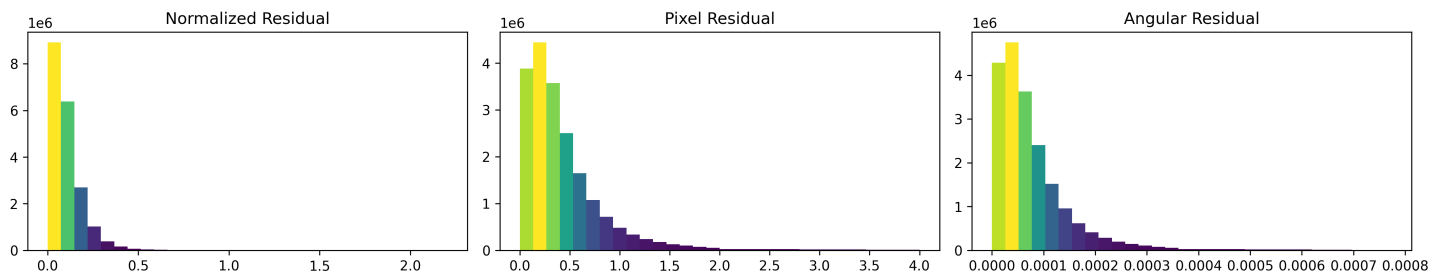
Features Details



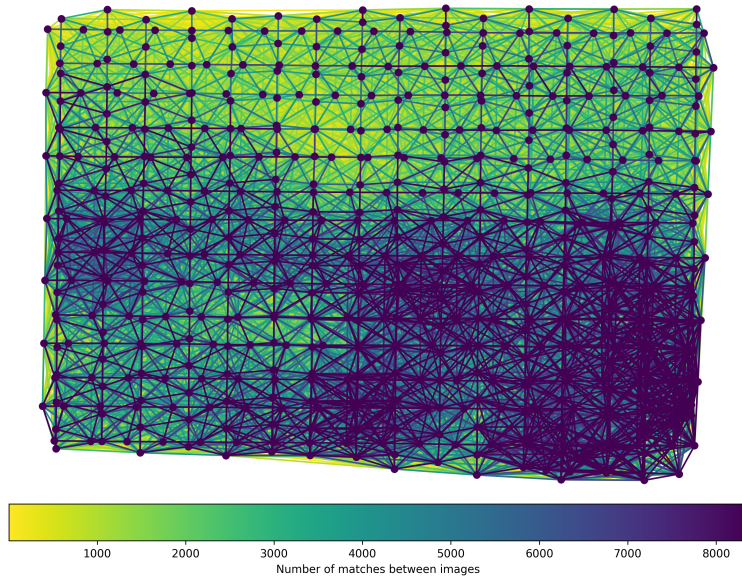
	Min.	Max.	Mean	Median
Detected	80513	254563	152667	152259
Reconstructed	7940	105982	35731	33830

Reconstruction Details

Average Reprojection Error (normalized / pixels / angular)	0.10 / 0.44 / 0.00008
Average Track Length	3.71 images
Average Track Length (> 2)	6.15 images



Tracks Details



Length	2	3	4	5	6	7	8	9	10
Count	3167022	844394	388672	227276	150542	107132	80080	63200	50447

Camera Models Details

v2 hasselblad l1d-20c 5472 3648 brown 0.7777

	k1	k2	k3	p1	p2	focal	aspect_ratio	cx	cy
Initial	0.0000	0.0000	0.0000	0.0000	0.0000	0.7778	1.0000	0.0000	0.0000
Optimized	-0.2951	-0.0304	0.1400	0.0118	0.0018	1.0179	1.0000	-0.0015	-0.0428

