

# ODM Quality Report

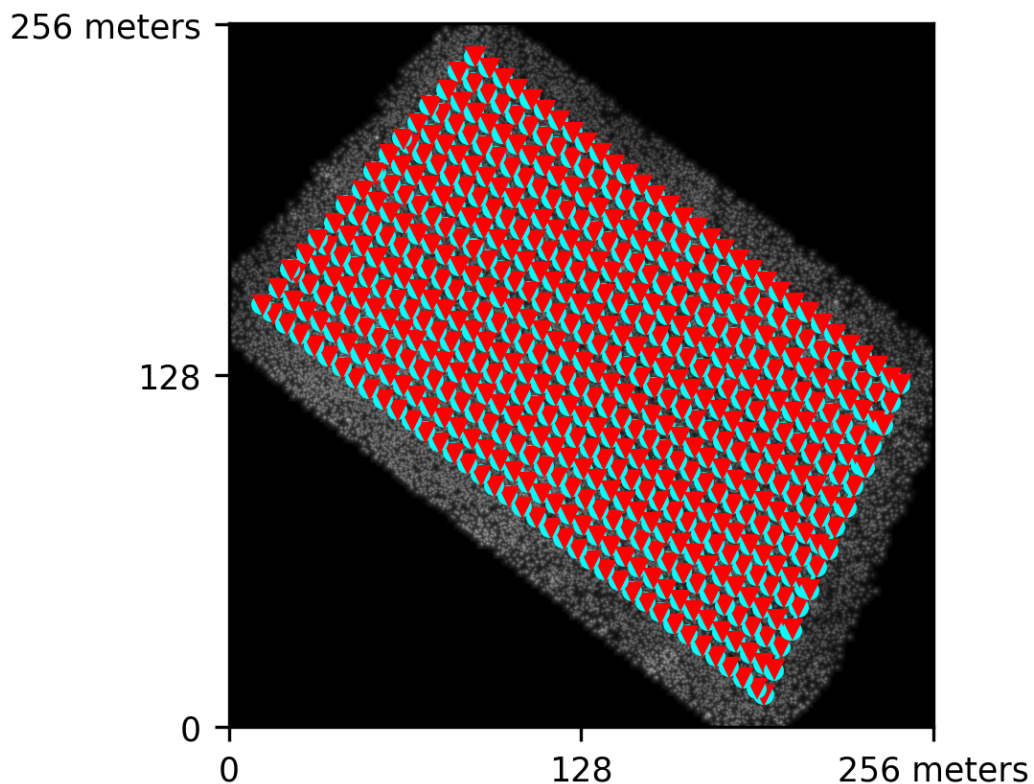
Processed with ODM version 2.8.8

## Dataset Summary

Date	15/10/2022 at 12:58:55
Area Covered	0.054186 km <sup>2</sup>
Processing Time	3.0h:40.0m:37.0s
Capture Start	30/06/2022 at 05:58:57
Capture End	30/06/2022 at 06:30:14

## Processing Summary

Reconstructed Images	562 over 562 shots (100.0%)
Reconstructed Points (Sparse)	786110 over 788506 points (99.7%)
Reconstructed Points (Dense)	14,728,960 points
Average Ground Sampling Distance (GSD)	2.2 cm
Detected Features	12,053 features
Reconstructed Features	10,379 features
Geographic Reference	GPS and GCP
GPS / GCP errors	3.17 / 0.02 meters

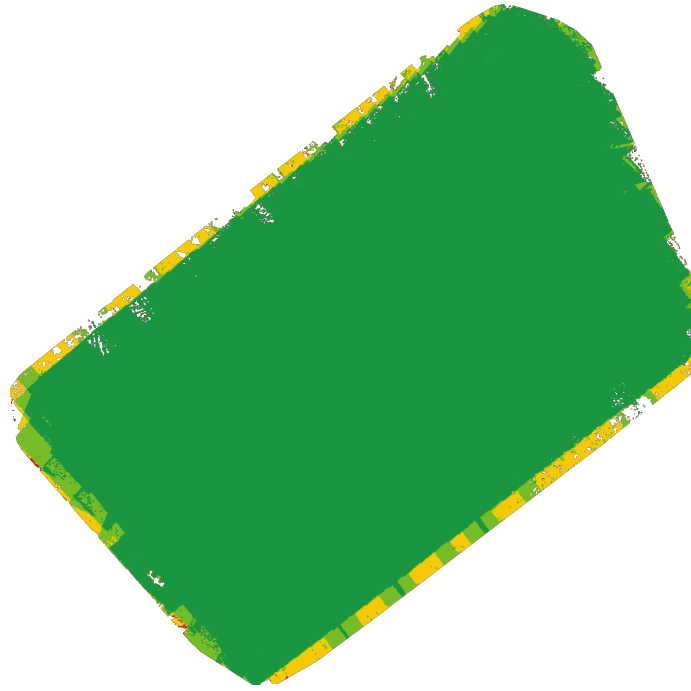


## Previews



Orthophoto

# Survey Data



■ 2 ■ 3 ■ 4 ■ 5+

## GPS/GCP/3D Errors Details

GPS	Mean	Sigma	RMS Error
X Error (meters)	-0.512	0.114	0.525
Y Error (meters)	-0.005	0.140	0.140
Z Error (meters)	-3.126	0.183	3.131
Total			3.173

GCP	Mean	Sigma	RMS Error
X Error (meters)	0.000	0.001	0.002
Y Error (meters)	-0.000	0.003	0.003
Z Error (meters)	0.018	0.014	0.023
Total			0.019

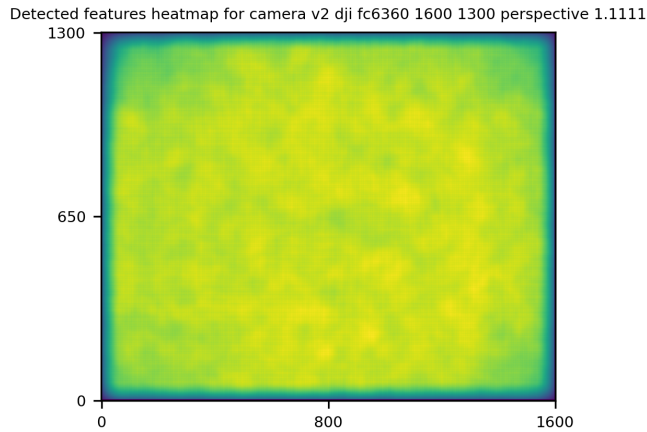
3D	Mean	Sigma	RMS Error
X Error (meters)	0.020	0.033	0.038
Y Error (meters)	0.023	0.066	0.070
Z Error (meters)	0.085	0.238	0.252
Total			0.095

	Absolute	Relative
Horizontal Accuracy CE90 (meters)	0.004	0.053
Vertical Accuracy LE90 (meters)	0.035	0.158

## Ground Control Point Error

ID	Error X (m)	Error Y (m)	Error Z (m)
GCP-0	0.002	-0.003	0.012
GCP-1	-0.000	0.003	0.015
GCP-2	0.001	-0.000	-0.003
GCP-3	-0.001	0.002	0.018
GCP-4	0.002	0.004	0.011
GCP-5	0.001	0.000	0.007
GCP-6	0.002	-0.004	0.020
GCP-7	-0.003	-0.004	0.035
GCP-8	-0.000	0.001	0.046

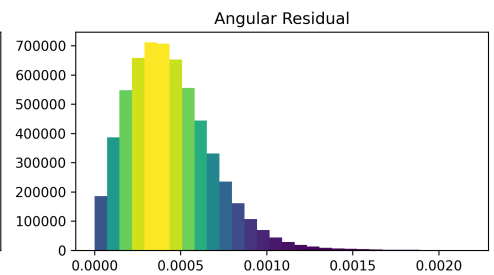
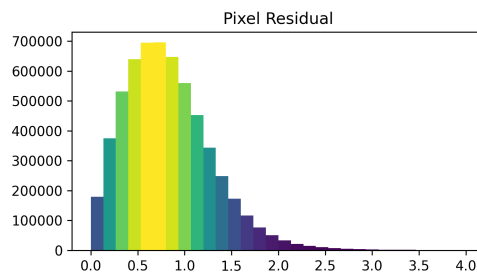
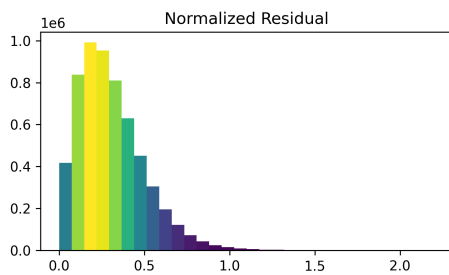
# Features Details



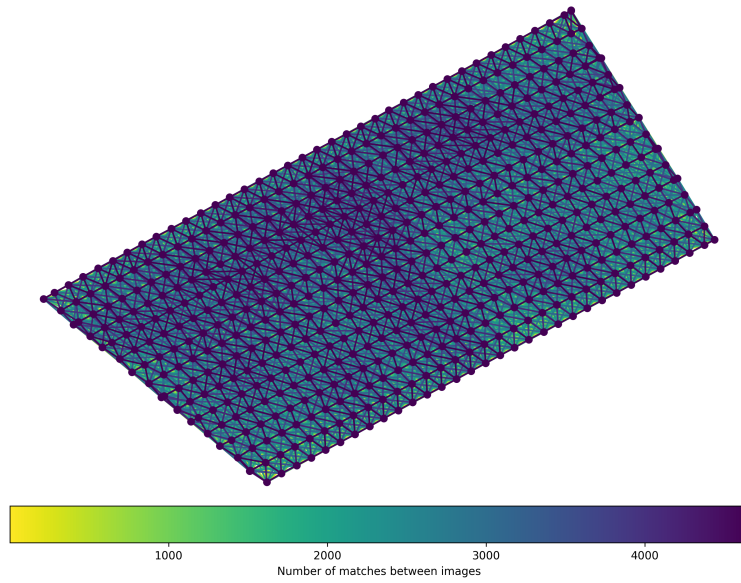
	Min.	Max.	Mean	Median
Detected	10016	14955	12108	12053
Reconstructed	8202	13060	10508	10379

# Reconstruction Details

Average Reprojection Error (normalized / pixels / angular)	0.31 / 0.83 / 0.00044
Average Track Length	7.51 images
Average Track Length (> 2)	9.00 images



# Tracks Details



Length	2	3	4	5	6	7	8	9	10
Count	167504	98839	72320	56907	45892	40275	36444	32879	28672

# Camera Models Details

v2 dji fc6360 1600 1300 perspective 1.1111

	k1	k2	focal
Initial	0.0000	0.0000	1.1111
Optimized	-0.3652	0.1685	1.1695

